

**PAB650Hu01**

**Polyclonal Antibody to Major Basic Protein (MBP)**

**Organism Species: Homo sapiens (Human)**

***Instruction manual***

FOR IN VITRO USE AND RESEARCH USE ONLY  
NOT FOR USE IN CLINICAL DIAGNOSTIC PROCEDURES

9th Edition (Revised in Jul, 2013)

## **[ PRODUCT INFORMATION ]**

**Immunogen:** MBP, Human

**Clonality:** Polyclonal

**Host:** Rabbit

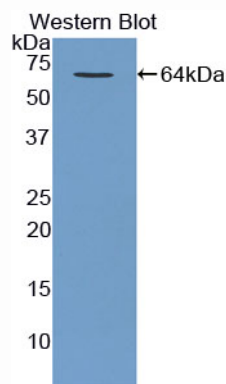
**Immunoglobulin Type:** IgG

**Purification:** Affinity Chromatography.

**Applications:** WB, ICC, IHC-P, IHC-F, ELISA

**Concentration:** 200µg/mL

**UOM:** 50µg



*Sample: Recombinant MBP, Human*

## **[ IMMUNOGEN INFORMATION ]**

**Immunogen:** Recombinant MBP (Gln105~Tyr222) expressed in *E.coli*.

**Accession No.:** RPB650Hu01

**Sequence:** The target protein is fused with two N-terminal Tags, His-tag and MBP-tag and its sequence is listed below.

MKIEEGKLV I WINGDKGYNG LAEVGKKFEK DTGIKVTVEH PDKLEEKFPQ VAATGDGPDI  
IFWAHDRFGG YAQSGLLAEI TPDKAFQDKL YPFTWDAVRY NGKLIAYPIA VEALSLIYNK  
DLLPNPPKTW EEIPALDKEL KAKGKSALMF NLQEPYFTWP LIAADGGYAF KYENGKYDIK  
DVGVDNAGAK AGLTFLVDLI KNKHMNADTD YSIAEAAFNK GETAMTINGP WAWSNIDTSK  
VNYGVTVLPT FKGQPSKPFV GVLSAGINAA SPNKELAKEF LENYLLTDEG LEAVNKDKPL  
GAVALKSYEE ELAKDPRIAA TMENAQKGEI MPNIPQMSAF WYAVRTAVIN AASGRQTVDE  
ALKDAQTGST SGSQHSHHHH SAGLVPRGST AIGMKETAAA KFERQHMDSP DLGTLEVLVLFQ  
GPLGSEF- QTCRYL LVRSLQTFSSQ AWFTCRRCYR GNLVSIHNFN INYRIQCSVS

ALNQGQVWIG GRITGSGRCR RFQWVDGSRW NFAYWAAHQP WSRGGHCVAL  
CTRGGHWRRRA HCLRRLPFIC SY

## **[ ANTIBODY SPECIFICITY ]**

The antibody is a rabbit polyclonal antibody raised against MBP. It has been selected for its ability to recognize MBP in immunohistochemical staining and western blotting.

## **[ APPLICATIONS ]**

Western blotting: 1:100-400

Immunocytochemistry in formalin fixed cells: 1:100-500

Immunohistochemistry in formalin fixed frozen section: 1:100-500

Immunohistochemistry in paraffin section: 1:50-200

Enzyme-linked Immunosorbent Assay: 1:100-200

Optimal working dilutions must be determined by end user.

## **[ CONTENTS ]**

**Form & Buffer:** Supplied as solution form in PBS, pH7.4, containing 0.02%  $\text{NaN}_3$ , 50% glycerol.

## **[ QUALITY CONTROL ]**

**Content:** The quality control contains recombinant MBP (Gln105~Tyr222) disposed in loading buffer.

**Usage:** 10uL per well when 3,3'-Diaminobenzidine(DAB) as the substrate.  
5uL per well when used in enhanced chemiluminescent (ECL).

**Note:** The quality control is specifically manufactured as the positive control. Not used for other purposes.

**Loading Buffer:** 100mM Tris(pH8.8), 2% SDS, 200mM NaCl, 50% glycerol, BPB 0.01%,  $\text{NaN}_3$  0.02%.

## **[ STORAGE ]**

Store at 4°C for frequent use. Stored at -20°C to -80°C in a manual defrost freezer for one year without detectable loss of activity. Avoid repeated freeze-thaw cycles.