

PAB611Hu02

Polyclonal Antibody to Neuraminidase (NEU)

Organism Species: Homo sapiens (Human)

Instruction manual

FOR IN VITRO USE AND RESEARCH USE ONLY

NOT FOR USE IN CLINICAL DIAGNOSTIC PROCEDURES

9th Edition (Revised in Jul, 2013)

[PRODUCT INFORMATION]

Immunogen: NEU, Human

Clonality: Polyclonal

Host: Rabbit

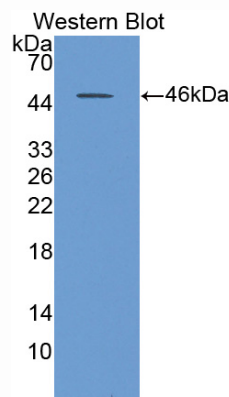
Immunoglobulin Type: IgG

Purification: Affinity Chromatography.

Applications: WB, ICC, IHC-P, IHC-F, ELISA

Concentration: 200µg/mL

UOM: 100µg



Sample: Recombinant NEU, Human

[IMMUNOGEN INFORMATION]

Immunogen: Recombinant NEU (Ala47~Leu415) expressed in *E.coli*.

Accession No.: RPB611Hu02

Sequence: The target protein is fused with two N-terminal Tags, His-tag and S-tag and its sequence is listed below.

MHHHHHHSSG LVPRGSGMKE TAAKFERQH MDSPDLGTDD DDKAMADIGS EF- AEND
FGLVQPLVTM EQLLWVSGRQ IGSVDTFRIP LITATPRGTL LAFAEARKMS SSDEGAKFIA
LRRSMDQGSGT WSPTAFIVND GDVPDGLNLG AVVSDVETGV VFLFYSLCAH KAGCQVASTM
LVWSKDDGVS WSTPRNLSLD IGTEVFAPGP GSGIQKQREP RKGR LIVCGH GTLERDGVFC
LLSDDHGASW RYGSGVSGIP YGQPKQENDF NPDECQPYEL PDGSVVINAR
NQNNYHCHCR IVLRSDACD TLRPRDVTFD PELVDPVVAA GAVVTSSGIV FFSNPAHPEF
RVNLT LRWSF SNGTSWRKET VQLWPGPSGY SSLATLEGSM DGEEQAPQLY
VLYEKGRNH YTESISVAKIS VYGTL

[ANTIBODY SPECIFICITY]

The antibody is a rabbit polyclonal antibody raised against NEU. It has been selected for its ability to recognize NEU in immunohistochemical staining and western blotting.

[APPLICATIONS]

Western blotting: 1:100-400

Immunocytochemistry in formalin fixed cells: 1:100-500

Immunohistochemistry in formalin fixed frozen section: 1:100-500

Immunohistochemistry in paraffin section: 1:50-200

Enzyme-linked Immunosorbent Assay: 1:100-200

Optimal working dilutions must be determined by end user.

[CONTENTS]

Form & Buffer: Supplied as solution form in PBS, pH7.4, containing 0.02% NaN_3 , 50% glycerol.

[QUALITY CONTROL]

Content: The quality control contains recombinant NEU (Ala47~Leu415) disposed in loading buffer.

Usage: 10uL per well when 3,3'-Diaminobenzidine(DAB) as the substrate.

5uL per well when used in enhanced chemiluminescent (ECL).

Note: The quality control is specifically manufactured as the positive control. Not used for other purposes.

Loading Buffer: 100mM Tris(pH8.8), 2% SDS, 200mM NaCl, 50% glycerol, BPB 0.01%, NaN_3 0.02%.

[STORAGE]

Store at 4°C for frequent use. Stored at -20°C to -80°C in a manual defrost freezer for one year without detectable loss of activity. Avoid repeated freeze-thaw cycles.