



**A91608Hu01**

**Polyclonal Antibody to Nuclear Receptor Subfamily 3, Group C, Member 1 (NR3C1)**

**Instruction manual**

FOR IN VITRO USE AND RESEARCH USE ONLY  
NOT FOR USE IN DIAGNOSTIC OR THERAPEUTIC PROCEDURES

4th Edition (Revised in September, 2012)

## [ **PRODUCT INFORMATION** ]

**Immunogen:** NR3C1

**Clonality:** Polyclonal

**Host:** Rabbit

**Species Reactivity:** Human

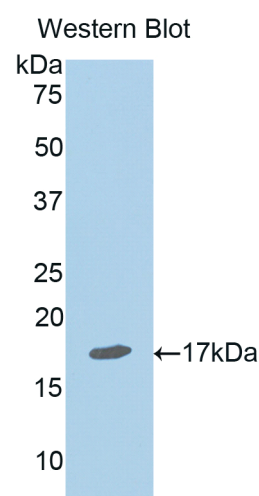
**Ig type:** Rabbit IgG

**Purification:** Antibodies are purified by target protein affinity chromatography.

**Applications:** WB, ICC, IHC-P, IHC-F

**Form:** Liquid

**Size:** 100µg



*Sample: Recombinant human NR3C1*

## [ **IMMUNOGEN INFORMATION** ]

**Immunogen:** Recombinant human NR3C1 (Val41~Tyr184) expressed in *E.coli*.

**Molecular Weight:** 16.7 kDa

**USCN accession No.:** P91608Hu01

**Sequence:** The target protein is fused with N-terminal His-Tag and its sequence is listed below.

MGHHHHHSGSEF-VSASSPSLAV ASQSDSKQRR LLVDFPKGSV SNAQQPDL SK AVLSMGLYM GETETKVMGN  
DLGFPQQGQI SLSSGETDLK LLEESIANLN RSTSVPENPK SSASTAVSAA PTEKEFPKTH SDVSSEQQHL KGQTGTNGGN VKLY



## **[ ANTIBODY SPECIFICITY ]**

Anti NR3C1 is a rabbit polyclonal antibody raised against human NR3C1. This antibody has been selected for its ability to recognize human NR3C1 in immunohistochemical staining and western blotting, non cross-reactive with other members of the family.

## **[ APPLICATIONS ]**

Western blotting: 1:100-400

Immunocytochemistry in formalin fixed cells: 1:100-500

Immunohistochemistry in formalin fixed frozen section: 1:100-500

Immunohistochemistry in paraffin section: 1:50-200

Optimal working dilutions must be determined by end user.

## **[ CONTENTS ]**

**Form & Buffer:** Supplied as solution form in PBS, pH 7.4, containing 0.02%Na<sub>3</sub>N, 50% glycerol.

## **[ STORAGE ]**

Store at 4°C for frequent use. Stored at -20°C to -80°C in a manual defrost freezer for one year without detectable loss of activity. Avoid repeated freeze-thaw cycles.

