

PAB547Hu01

Polyclonal Antibody to Indoleamine-2,3-Dioxygenase (IDO)

Organism Species: Homo sapiens (Human)

Instruction manual

FOR IN VITRO USE AND RESEARCH USE ONLY
NOT FOR USE IN CLINICAL DIAGNOSTIC PROCEDURES

9th Edition (Revised in Jul, 2013)

[**PRODUCT INFORMATION**]

Immunogen: IDO, Human

Clonality: Polyclonal

Host: Rabbit

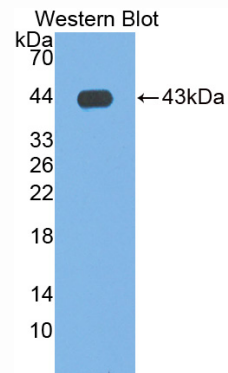
Immunoglobulin Type: IgG

Purification: Affinity Chromatography.

Applications: WB, ICC, IHC-P, IHC-F, ELISA

Concentration: 200µg/mL

UOM: 100µg



Sample: Recombinant IDO, Human

[**IMMUNOGEN INFORMATION**]

Immunogen: Recombinant IDO (Ala2~Gly403) expressed in *E. coli*.

Accession No.: RPB547Hu01

Sequence: The target protein is fused with N-terminal His-Tag and its sequence is listed below.

MGHHHHHSGSEF-AHAMENSWT ISKEYHIDEE VGFALPNPQE NLPDFYNDWM
FIAKHLPLDI ESGQLRERVE KLNMLSIDHL TDHKSQRLAR LVLGCITMAY VWGKGHGDVR
KVLPRNIAVP YCQLSKKLEL PPILVYADCV LANWKKKDPN KPLTYENMDV LFSFRDGDSC
KGFFLVSLLV EIAAASAIKV IPTVFKAMQM QERDTLLKAL LEIASCLEKA LQVFHQIHDH
VNPKAFFSVL RIYLSGWKGN PQLSDGLVYE GFWEDPKEFA GGSAGQSSVF QCFDVLGLIQ
QTAGGGHAAQ FLQDMRRYMP PAHRNFLCSL ESNPSVREFV LSKGDAGLRE AYDACVKALV
SLRSYHLQIV TKYILIPASQ QPKENKTSER PSKLEAKGTG GTDLMNFKT VRSTTEKSL
KEG

[ANTIBODY SPECIFICITY]

The antibody is a rabbit polyclonal antibody raised against IDO. It has been selected for its ability to recognize IDO in immunohistochemical staining and western blotting.

[APPLICATIONS]

Western blotting: 1:50-400

Immunocytochemistry in formalin fixed cells: 1:50-500

Immunohistochemistry in formalin fixed frozen section: 1:50-500

Immunohistochemistry in paraffin section: 1:10-100

Enzyme-linked Immunosorbent Assay: 1:100-200

Optimal working dilutions must be determined by end user.

[CONTENTS]

Form & Buffer: Supplied as solution form in PBS, pH7.4, containing 0.02% NaN₃, 50% glycerol.

[QUALITY CONTROL]

Content: The quality control contains recombinant IDO (Ala2~Gly403) disposed in loading buffer.

Usage: 10uL per well when 3,3'-Diaminobenzidine(DAB) as the substrate.
5uL per well when used in enhanced chemiluminescent (ECL).

Note: The quality control is specifically manufactured as the positive control. Not used for other purposes.

Loading Buffer: 100mM Tris(pH8.8), 2% SDS, 200mM NaCl, 50% glycerol, BPB 0.01%, NaN₃ 0.02%.

[STORAGE]

Store at 4°C for frequent use. Stored at -20°C to -80°C in a manual defrost freezer for one year without detectable loss of activity. Avoid repeated freeze-thaw cycles.