

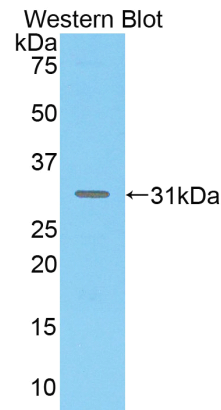
A91521Mu01
Polyclonal Antibody
To Mucosal Addressin Cell Adhesion Molecule 1 (MAdCAM1)
Organism: Mus musculus (Mouse)
Instruction manual

FOR IN VITRO USE AND RESEARCH USE ONLY
 NOT FOR USE IN CLINICAL DIAGNOSTIC PROCEDURES

6th Edition (Revised in March, 2013)

[PRODUCT INFORMATION]

Immunogen: MAdCAM1, Mouse
Clonality: Polyclonal
Host: Rabbit
Immunoglobulin Type: IgG
Purification: Affinity Chromatography.
Applications: WB, ICC, IHC-P, IHC-F
Concentration: 200µg/mL
UOM: 100µg






Sample: Recombinant MAdCAM1, Mouse

[IMMUNOGEN INFORMATION]

Immunogen: Recombinant MAdCAM1 (Pro29~Cys297) expressed in *E. coli*.
USCN Accession No.: P91521Mu01
Sequence: The target protein is fused with N-terminal His-Tag and its sequence is listed below.

MGHHHHHSG SEF- PE SEVAVAMGTS LQITCSMSCD EGVARVHWRG LDTSLGVSQV
 LPGSSILSVR GMLSDTGTPV CVGSCGSRSF QHSVKILVYA FPDQLVVSPE FLVPGQDQVV
 SCTAHNIWPA DPNSLSFALL LGEQRLEGAQ ALEPEQEEI QEAEGLPLFR MTQRWRLPSL
 GTPAPPALHC QVTMQLPKLV LTHRKEIPVL QSQTSPKPPN TTSAEPYILT SSSTAEAVST
 GLNITTLPSA PPYPKLSVRT LSSEGPCRPK IHQDLEAGWE LLCEAST

Unique product Superb quality Client favorite Nicest service  ISO9001:2008 ;  ISO13485:2003 ; 

[ANTIBODY SPECIFICITY]

The antibody is a rabbit polyclonal antibody raised against MAdCAM1. It has been selected for its ability to recognize MAdCAM1 in immunohistochemical staining and western blotting.

[APPLICATIONS]

Western blotting: 1:100-400

Immunocytochemistry in formalin fixed cells: 1:100-500

Immunohistochemistry in formalin fixed frozen section: 1:100-500

Immunohistochemistry in paraffin section: 1:50-200

Optimal working dilutions must be determined by end user.

[CONTENTS]

Form & Buffer: Supplied as solution form in PBS, pH7.4, containing 0.02% NaN₃, 50% glycerol.

[QUALITY CONTROL]

Content: The quality control contains recombinant MAdCAM1 (Pro29~Cys297) disposed in loading buffer.

Usage: 10uL per well when 3,3'-Diaminobenzidine(DAB) as the substrate.
5uL per well when used in enhanced chemiluminescent (ECL).

Note: The quality control is specifically manufactured as the positive control. Not used for other purposes.

Loading Buffer: 100mM Tris(pH8.8), 2% SDS, 200mM NaCl, 50% glycerol, BPB 0.01%, NaN₃ 0.02%.

[STORAGE]

Store at 4°C for frequent use. Stored at -20°C to -80°C in a manual defrost freezer for one year without detectable loss of activity. Avoid repeated freeze-thaw cycles.