

**PAB509Hu01**

**Polyclonal Antibody to Killer Cell Immunoglobulin Like Receptor 2DL1 (KIR2DL1)**

**Organism Species: Homo sapiens (Human)**

***Instruction manual***

FOR IN VITRO USE AND RESEARCH USE ONLY

NOT FOR USE IN CLINICAL DIAGNOSTIC PROCEDURES

## [ **PRODUCT INFORMATION** ]

**Immunogen:** KIR2DL1, Human

**Clonality:** Polyclonal

**Host:** Rabbit

**Immunoglobulin Type:** IgG

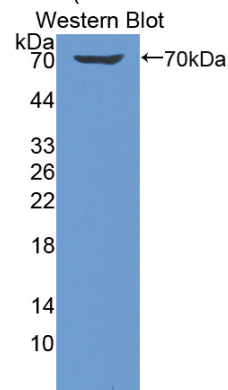
**Purification:** Affinity Chromatography.

**Applications:** WB, ICC, IHC-P, IHC-F, ELISA

**Concentration:** 200µg/mL

**UOM:** 100µg

9th Edition (Revised in Jul, 2013)



Sample: Recombinant KIR2DL1, Human

## [ **IMMUNOGEN INFORMATION** ]

**Immunogen:** Recombinant KIR2DL1 (His22~Pro348) expressed in *E. coli*.

**Accession No.:** RPB509Hu01

**Sequence:** The target protein is fused with two N-terminal Tags, His-tag and GST-tag and its sequence is listed below.

MSPILGYWKI KGLVQPTRL L LEYLEEKYEE HLYERDEGDK WRNKKFELGL EFPNLPYYID  
GDVKLTQSMA IIRYIADKHN MLGGCPKERA EISMLEGAVL DIRYGVSRIA YSKDFETLKV  
DFLSKLP EML KMFEDRLCHK TYLNGDHVTH PDFMLYDALD VVLYMDPMCL DAFPKLVCFK  
KRIEAIQID KYLKSSKYIA WPLQG WQATF GGGDHPPKSD GSTSGSGHHH HHSAGLVPR  
GSTAIGMKET AAKFERQHM DSPDLGTLEV LFQGPLGSEF- HEGVHRKPS LLAHPGPLVK  
SEETVILQCW SDVMFEHFL L HREGMFNDTL RLIGEHDGV SKANFSISRM TQDLA GTYRC  
YGSVTHSPYQ VSAPSDPLDI VIIGLYEKPS LSAQPGPTVL AGENVTLSCS SRSSYDMYHL  
SREGEAHERR LPAGPKVNGT FQADFPLGPA THGGTYRCFG SFHDSPYEWS KSSDPLLVSV

TGNPSNSWPS PTEPSSKTGN PRHLHILIGT SVVIILFILL FLLHRWCSN KKNAAVMDQE  
SAGNRTANSE DSDEQDPQEV TYTQLNHCVF TQRKITRPSQ RPKTPPTDII VYTELPNAES  
RSKVVSCP

## **[ ANTIBODY SPECIFICITY ]**

The antibody is a rabbit polyclonal antibody raised against KIR2DL1. It has been selected for its ability to recognize KIR2DL1 in immunohistochemical staining and western blotting.

## **[ APPLICATIONS ]**

Western blotting: 1:100-400

Immunocytochemistry in formalin fixed cells: 1:100-500

Immunohistochemistry in formalin fixed frozen section: 1:100-500

Immunohistochemistry in paraffin section: 1:50-200

Enzyme-linked Immunosorbent Assay: 1:100-200

Optimal working dilutions must be determined by end user.

## **[ CONTENTS ]**

**Form & Buffer:** Supplied as solution form in PBS, pH7.4, containing 0.02% NaN<sub>3</sub>, 50% glycerol.

## **[ QUALITY CONTROL ]**

**Content:** The quality control contains recombinant KIR2DL1 (His22~Pro348) disposed in loading buffer.

**Usage:** 10uL per well when 3,3'-Diaminobenzidine(DAB) as the substrate.  
5uL per well when used in enhanced chemiluminescent (ECL).

**Note:** The quality control is specifically manufactured as the positive control. Not used for other purposes.

**Loading Buffer:** 100mM Tris(pH8.8), 2% SDS, 200mM NaCl, 50% glycerol, BPB 0.01%, NaN<sub>3</sub> 0.02%.

## **[ STORAGE ]**

Store at 4°C for frequent use. Stored at -20°C to -80°C in a manual defrost freezer for one year without detectable loss of activity. Avoid repeated freeze-thaw cycles.