

**PAB496Hu01**

**Polyclonal Antibody to Lumican (LUM)**  
**Organism Species: Homo sapiens (Human)**

***Instruction manual***

FOR IN VITRO USE AND RESEARCH USE ONLY  
NOT FOR USE IN CLINICAL DIAGNOSTIC PROCEDURES

9th Edition (Revised in Jul, 2013)

## **[ PRODUCT INFORMATION ]**

**Immunogen:** LUM, Human

**Clonality:** Polyclonal

**Host:** Rabbit

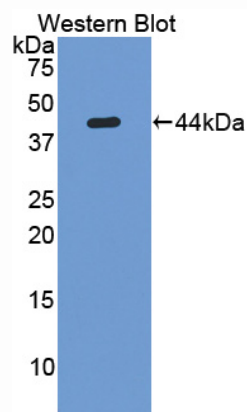
**Immunoglobulin Type:** IgG

**Purification:** Affinity Chromatography.

**Applications:** WB, ICC, IHC-P, IHC-F, ELISA

**Concentration:** 200µg/mL

**UOM:** 100µg



*Sample: Recombinant LUM, Human*

## **[ IMMUNOGEN INFORMATION ]**

**Immunogen:** Recombinant LUM (Gln19~Asn338) expressed in *E.coli*.

**Accession No.:** RPB496Hu01

**Sequence:** The target protein is fused with N-terminal His-Tag and its sequence is listed below.

MGHHHHHHSGSEF-QY YDYDIPLFMY GQISPNCAPC CNCPHSYPTA MYCDDLKLS  
VPMVPPGIKY LYLRNNQIDH IDEKAFENVT DLQWLILDHN LLENSKIKGK VFSKLGKQK  
LHINYNNLTSV GGLPKSLQ DLQLTNNKIS KLGSLDGLVN LTFIYLQHNQ LKEDAVSASL  
KGLKSLEYLD LSFNQMSKLP AGLPTSLTL YLDNNKISNI PDEYFKRFTG LQYLRLSHNE  
LADSGVPGNS FNISLLELD LSYNKLKISIP TVNENLENY LEVNELEKFD VKSFCKILGP  
LSYSKIKHLR LDGNPLTQSS LPPDMYECLR VANEITVN

## **[ ANTIBODY SPECIFICITY ]**

The antibody is a rabbit polyclonal antibody raised against LUM. It has been selected for its ability to recognize LUM in immunohistochemical staining and western blotting.

## **[ APPLICATIONS ]**

Western blotting: 1:100-400

Immunocytochemistry in formalin fixed cells: 1:100-500

Immunohistochemistry in formalin fixed frozen section: 1:100-500

Immunohistochemistry in paraffin section: 1:50-200

Enzyme-linked Immunosorbent Assay: 1:100-200

Optimal working dilutions must be determined by end user.

## **[ CONTENTS ]**

**Form & Buffer:** Supplied as solution form in PBS, pH7.4, containing 0.02%  $\text{NaN}_3$ , 50% glycerol.

## **[ QUALITY CONTROL ]**

**Content:** The quality control contains recombinant LUM (Gln19~Asn338) disposed in loading buffer.

**Usage:** 10uL per well when 3,3'-Diaminobenzidine(DAB) as the substrate.

5uL per well when used in enhanced chemiluminescent (ECL).

**Note:** The quality control is specifically manufactured as the positive control. Not used for other purposes.

**Loading Buffer:** 100mM Tris(pH8.8), 2% SDS, 200mM NaCl, 50% glycerol, BPB 0.01%,  $\text{NaN}_3$  0.02%.

## **[ STORAGE ]**

Store at 4°C for frequent use. Stored at -20°C to -80°C in a manual defrost freezer for one year without detectable loss of activity. Avoid repeated freeze-thaw cycles.