

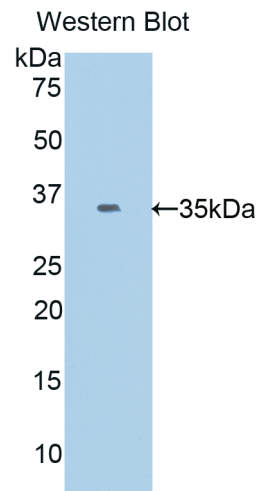
A91467Mu01
Polyclonal Antibody to Connexin 31 (CX31)
Instruction manual

FOR IN VITRO USE AND RESEARCH USE ONLY
NOT FOR USE IN CLINICAL DIAGNOSTIC PROCEDURES

5th Edition (Revised in January, 2013)

[PRODUCT INFORMATION]




Immunogen: CX31
Clonality: Polyclonal
Host: Rabbit
Species Reactivity: Mouse
Ig type: Rabbit IgG
Purification: Antibodies are purified by target protein affinity chromatography.
Applications: WB, ICC, IHC-P, IHC-F
Form: Liquid
Size: 100µg



Sample: Recombinant mouse CX31

[IMMUNOGEN INFORMATION]

Immunogen: Recombinant mouse CX31 (Arg213~Ile270) expressed in *E.coli*.
Molecular Weight: 33.2kDa
USCN accession No.: P91467Mu01
Sequence: The target protein is fused with two N-terminal Tags, His-tag and GST-tag and its sequence is listed below.
MRNKKFELGL EFPNLPYYID GDVKLTQSMA IIRYIADKHN MLGGCPKERA EISMLEGAVL
DIRYGVSRIA YSKDFETLKV DFLSKLPEML KMFEDRLCHK TYLNGDHVTH PDFMLYDALD
VVLYMDPMCL DAFPKLVCFK KRIEAIPIQID KYLKSSKYIA WPLQGQWQATF GGGDHPKPSD

Unique product Superb quality Client favorite Nicest service  ISO9001:2008 ;  ISO13485:2003 ; 

GSTSGSGHHH HHHSAGLVPR GSTAIGMKET AAAKFERQHM DSPDLGTLEV Lfq
GPLGSEF- RIMRGISK GKSTKSISSP KSSSRASTCR CHHKLLESGD PEADPASEKL
QASAPSLTPI

[**ANTIBODY SPECIFICITY**]

Anti CX31 is a rabbit polyclonal antibody raised against mouse CX31. This antibody has been selected for its ability to recognize mouse CX31 in immunohistochemical staining and western blotting, non cross-reactive with other members of the family.

[**APPLICATIONS**]

Western blotting: 1:100-400

Immunocytochemistry in formalin fixed cells: 1:100-500

Immunohistochemistry in formalin fixed frozen section: 1:100-500

Immunohistochemistry in paraffin section: 1:50-200

Optimal working dilutions must be determined by end user.

[**CONTENTS**]

Form & Buffer: Supplied as solution form in PBS, pH 7.4, containing 0.02%Na₃N, 50% glycerol.

[**QUALITY CONTROL**]

Content: The quality control contains recombinant mouse CX31 (Arg213~Ile270) disposed in loading buffer.

Usage: 10uL per well when 3,3'-Diaminobenzidine(DAB) as the substrate.
5uL per well when used in enhanced chemiluminescent (ECL).

Note: The quality control is specifically manufactured as the positive control. Not used for other purposes.

Loading buffer: 100mM Tris(PH 8.8), 2%SDS, 200mM NaCl, 50% glycerol, BPB 0.01%, Na₃N 0.02%.

[**STORAGE**]

Store at 4°C for frequent use. Stored at -20°C to -80°C in a manual defrost freezer for one year without detectable loss of activity. Avoid repeated freeze-thaw cycles.