

**PAB449Mu01**

**Polyclonal Antibody to Enolase, Non Neuronal (NNE)**

**Organism Species: *Mus musculus* (Mouse)**

***Instruction manual***

FOR IN VITRO USE AND RESEARCH USE ONLY

NOT FOR USE IN CLINICAL DIAGNOSTIC PROCEDURES

---

---

9th Edition (Revised in Jul, 2013)

## **[ PRODUCT INFORMATION ]**

**Immunogen:** NNE, Mouse

**Clonality:** Polyclonal

**Host:** Rabbit

**Immunoglobulin Type:** IgG

**Purification:** Affinity Chromatography.

**Applications:** WB, ICC, IHC-P, IHC-F, ELISA

**Concentration:** 200µg/mL

**UOM:** 100µg

## **[ IMMUNOGEN INFORMATION ]**

**Immunogen:** Recombinant NNE (Met1~Lys434) expressed in *E.coli*.

**Accession No.:** rP91449Mu01

**Sequence:** The target protein is fused with N-terminal His-Tag and its sequence is listed below.

MGHHHHHSHGSEFELRRQAC- MSILRIHARE IFDSRGNPTV EVDLYTAKGL FRAAVPSGAS  
TGIYEALRLR DNDKTRFMGK GVSQAVEHIN KTIAPALVSK KVVNVEQEKI DKLMIEMDGT  
ENKSKFGANA ILGVSLAVCK AGAVEKGVPL YRHIADLAGN PEVILPVPAP NVINGGSHAG  
NKLAMQEFMI LPVGASSFRE AMRIGAEVYH NLKNVIKEY GKDATNVGDE GGFAPNILEN  
KEALELLKTA IAKAGYTDQV VIGMDVAASE FYRSGKYDLD FKSPDDPSRY ITPDQLADLY  
KSFVQNYPPV SIEDPFDQDD WGAWQKFTAS AGIQVVGDDL TVTNPKRIAK AASEKSCNCL  
LLKVNQIGSV TESLQACKLA QSNWGVMSV HRSGETEDTF IADLVVGLCT GQIKTGAPCR  
SERLAKYNQI LRIEEEELGSK AKFAGRSFRN PLAK

## **[ ANTIBODY SPECIFICITY ]**

The antibody is a rabbit polyclonal antibody raised against NNE. It has been selected for its ability to recognize NNE in immunohistochemical staining and western blotting.

## **[ APPLICATIONS ]**

Western blotting: 1:100-400

Immunocytochemistry in formalin fixed cells: 1:100-500

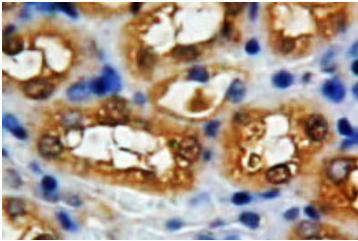
Immunohistochemistry in formalin fixed frozen section: 1:100-500

Immunohistochemistry in paraffin section: 1:50-200

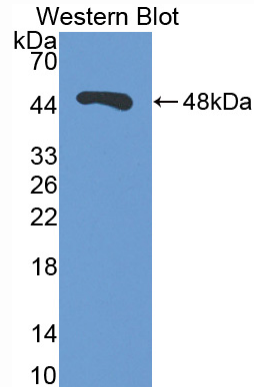
Enzyme-linked Immunosorbent Assay: 1:100-200

Optimal working dilutions must be determined by end user.

## [ IMAGES ]



Used in DAB staining on formalin fixed  
paraffin- embedded Kidney tissue



Used in Western Blot ,Sample:  
Recombinant NNE,Mouse

## [ CONTENTS ]

**Form & Buffer:** Supplied as solution form in PBS, pH7.4, containing 0.02%  $\text{NaN}_3$ , 50% glycerol.

## [ QUALITY CONTROL ]

**Content:** The quality control contains recombinant NNE (Met1~Lys434) disposed in loading buffer.

**Usage:** 10uL per well when 3,3'-Diaminobenzidine(DAB) as the substrate.  
5uL per well when used in enhanced chemiluminescent (ECL).

**Note:** The quality control is specifically manufactured as the positive control. Not used for other purposes.

**Loading Buffer:** 100mM Tris(pH8.8), 2% SDS, 200mM NaCl, 50% glycerol, BPB 0.01%,  $\text{NaN}_3$  0.02%.

## [ STORAGE ]

Store at 4°C for frequent use. Stored at -20°C to -80°C in a manual defrost freezer for one year without detectable loss of activity. Avoid repeated freeze-thaw cycles.