

PAB433Ra01

Polyclonal Antibody to Enolase, Muscle Specific (MSE)

Organism Species: Rattus norvegicus (Rat)

Instruction manual

FOR IN VITRO USE AND RESEARCH USE ONLY

NOT FOR USE IN CLINICAL DIAGNOSTIC PROCEDURES

9th Edition (Revised in Jul, 2013)

[PRODUCT INFORMATION]

Immunogen: MSE, Rat

Clonality: Polyclonal

Host: Rabbit

Immunoglobulin Type: IgG

Purification: Affinity Chromatography.

Applications: WB, ICC, IHC-P, IHC-F, ELISA

Concentration: 200µg/mL

UOM: 100µg

[IMMUNOGEN INFORMATION]

Immunogen: Recombinant MSE (Met3~Lys434) expressed in *E.coli*.

Accession No.: RPB433Ra01

Sequence: The target protein is fused with N-terminal His-Tag and its sequence is listed below.

MGHHHHHHS S-MQKIFARE ILDSRGNPTV EVDLHTAKGR FRAAVPSGAS TGIYEALRLR
DGDKSRYLKG GVLKAVEHIN KTLGPALLEK KLSVVDQEKV DKFMIELDGT ENKSKFGANA
ILGVSLAVCK AGAAEKGVPL YRHIADLAGN PDLVLPVPAF NVINGGSHAG NKLAMQEFMI
LPVGASSFKE AMRIGAEVYH HLKGVIKAKY GKDATNVGDE GGFAPNILEN NEALELLKTA
IQAAGYPDKV VIGMDVAASE FYRNGKYDLD FKSPDDPARH ISGEKLGELY KSFINKYPV
SIEDPFDQDD WATWTSFLSG VDIQIVGDDL TVTNPKRIAQ AVEKKACNCL LLKVNQIGSV
TESIQACKLA QSNGWGMVVS HRSGETEDTF IADLVVGLCT GQIKTGAPCR SERLAKYNQL
MRIEEALGDK AVFAGRKFRN PKAK

[ANTIBODY SPECIFICITY]

The antibody is a rabbit polyclonal antibody raised against MSE. It has been selected for its ability to recognize MSE in immunohistochemical staining and western blotting.

[APPLICATIONS]

Western blotting: 1:100-400

Immunocytochemistry in formalin fixed cells: 1:100-500

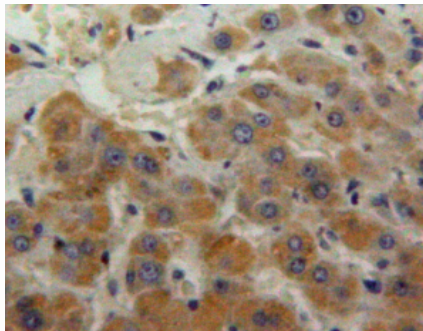
Immunohistochemistry in formalin fixed frozen section: 1:100-500

Immunohistochemistry in paraffin section: 1:50-200

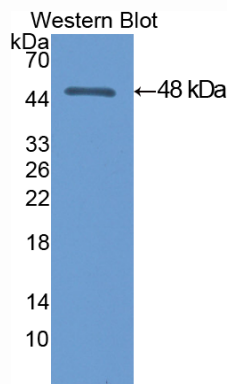
Enzyme-linked Immunosorbent Assay: 1:100-200

Optimal working dilutions must be determined by end user.

[IMAGES]



Used in DAB staining on formalin fixed
paraffin- embedded liver tissue



Used in Western Blot ,Sample:
Recombinant MSE,Rat

[CONTENTS]

Form & Buffer: Supplied as solution form in PBS, pH7.4, containing 0.02% NaN₃, 50% glycerol.

[QUALITY CONTROL]

Content: The quality control contains recombinant MSE (Met3~Lys434) disposed in loading buffer.

Usage: 10uL per well when 3,3'-Diaminobenzidine(DAB) as the substrate.
5uL per well when used in enhanced chemiluminescent (ECL).

Note: The quality control is specifically manufactured as the positive control. Not used for other purposes.

Loading Buffer: 100mM Tris(pH8.8), 2% SDS, 200mM NaCl, 50% glycerol, BPB 0.01%, NaN₃ 0.02%.

[STORAGE]

Store at 4°C for frequent use. Stored at -20°C to -80°C in a manual defrost freezer for one year without detectable loss of activity. Avoid repeated freeze-thaw cycles.