

PAB433Ga01

Polyclonal Antibody to Enolase, Muscle Specific (MSE)

Organism Species: Chicken (Gallus)

Instruction manual

FOR IN VITRO USE AND RESEARCH USE ONLY

NOT FOR USE IN CLINICAL DIAGNOSTIC PROCEDURES

9th Edition (Revised in Jul, 2013)

[PRODUCT INFORMATION]

Immunogen: MSE, Gallus

Clonality: Polyclonal

Host: Rabbit

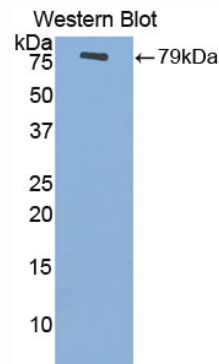
Immunoglobulin Type: IgG

Purification: Affinity Chromatography.

Applications: WB, ICC, IHC-P, IHC-F, ELISA

Concentration: 200µg/mL

UOM: 100µg



Sample: Recombinant MSE, Gallus

[IMMUNOGEN INFORMATION]

Immunogen: Recombinant MSE (Met1~Lys434) expressed in *E. coli*.

Accession No.: RPB433Ga01

Sequence: The target protein is fused with two N-terminal Tags, His-tag and GST-tag and its sequence is listed below.

MSPILGYWKI KGLVQPTRL L LEYLEEKYEE HLYERDEGDK WRNKKFELGL EFPNLPYYID
GDVKLTQSMA IIRYIADKHN MLGGCPKERA EISMLEGAVL DIRYGVSRIA YSKDFETLKV
DFLSKLP EML KMFEDRLCHK TYLNGDHVTH PDFMLYDALD VVLYMDPMCL DAFPKLVCFK
KRIEAIQID KYLKSSKYIA WPLQGWQATF GGGDHPKSD GSTSGSGHHH HHSAGLVPR
GSTAIGMKET AA AKFERQHM DSPDLGTLEV LFQGPLGSEF-MSIQKIHARE ILDSRGEPTV
EVDLHTAKGH FRAAVPSGAS TGIHEALEPR DGDKKRFLGK GVLKAVEHIN KTIGPALIEK
KISVVEQEKI DKVMIEMDGT ENKSKFGANA ILGVSLAVCK AGAAEKGVPL YRHIADLAGN
TELILPVP AF NVINGGSHAG NKLAMQEFMV LPVGAASFHD AMRVGAEVYH SLKGVKAKY
GKDATNVGGE GGFAPNILDN HEALELLKAA IAQAGYTDKV VIGMDVAASE FCRDGRYHLD

FKSPPHTKRY ITGSQLGEIY RGFIKDYPVV SIEDPFDQDDWEAWKRFFVH VDIQVVGDDL
TVTNPKRIAH GAEQHACNCL LLKVNQIGSV TESIACKLA QSHGWGMVS HRSGETEDTF
IADLVVGLCT GQIKTGAPCR SERLAKYNQL MRIEEALGDKAKFAGRKFRN PKAK

[ANTIBODY SPECIFICITY]

The antibody is a rabbit polyclonal antibody raised against MSE. It has been selected for its ability to recognize MSE in immunohistochemical staining and western blotting.

[APPLICATIONS]

Western blotting: 1:100-400

Immunocytochemistry in formalin fixed cells: 1:100-500

Immunohistochemistry in formalin fixed frozen section: 1:100-500

Immunohistochemistry in paraffin section: 1:50-200

Enzyme-linked Immunosorbent Assay: 1:100-200

Optimal working dilutions must be determined by end user.

[CONTENTS]

Form & Buffer: Supplied as solution form in PBS, pH7.4, containing 0.02% NaN₃, 50% glycerol.

[QUALITY CONTROL]

Content: The quality control contains recombinant MSE (Met1~Lys434) disposed in loading buffer.

Usage: 10uL per well when 3,3'-Diaminobenzidine(DAB) as the substrate.
5uL per well when used in enhanced chemiluminescent (ECL).

Note: The quality control is specifically manufactured as the positive control. Not used for other purposes.

Loading Buffer: 100mM Tris(pH8.8), 2% SDS, 200mM NaCl, 50% glycerol, BPB 0.01%, NaN₃ 0.02%.

[STORAGE]

Store at 4°C for frequent use. Stored at -20°C to -80°C in a manual defrost freezer for one year without detectable loss of activity. Avoid repeated freeze-thaw cycles.