

**PAB366Ra01**

**Polyclonal Antibody to Cadherin 5 (CDH5)**  
**Organism Species: Rattus norvegicus (Rat)**

***Instruction manual***

FOR IN VITRO USE AND RESEARCH USE ONLY  
NOT FOR USE IN CLINICAL DIAGNOSTIC PROCEDURES

## **[ PRODUCT INFORMATION ]**

**Immunogen:** CDH5, Rat

**Clonality:** Polyclonal

**Host:** Rabbit

**Immunoglobulin Type:** IgG

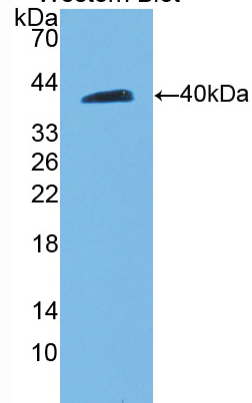
**Purification:** Affinity Chromatography.

**Applications:** WB, ICC, IHC-P, IHC-F, ELISA

**Concentration:** 200µg/mL

**UOM:** 100µg

9th Edition (Revised in Jul, 2013)  
Western Blot



Sample: Recombinant CDH5, Rat

## **[ IMMUNOGEN INFORMATION ]**

**Immunogen:** Recombinant CDH5 (Gly59~Gly382) expressed in *E.coli*.

**Accession No.:** RPB366Ra01

**Sequence:** The target protein is fused with two N-terminal Tags, His-tag and T7-tag and its sequence is listed below.

MGSSHHHHHHH SSGLVPRGSH MASMTGGQQM GRGSEF- GK IKS NVNRQNA  
KYVLQGEQAG KIFRVDADTG DVLAYERLDR EKVSEYFLTA LIVDKKTNKN LEQPSSFTVK  
VHDVNDNWPV FTHQVFNASV PEMS AIGTSV IRVTATDADD PTVAGHATVL YQMVKGNEYF  
AIDNSGLIFT KDKNLDRETR AEYKIVVEAQ DAQGLRGESG TATVLIRLED INDNFPIFTQ  
STYTFVSPED IRVGKPLGSL SVEDPDEPQN RMTKYSIMQG EYRDTFTIET DPDRNEGIK  
PTKPLDYELI QQYTFHIEAT DPTIRLG YLS STAGKNKAKI IINVLVDVDEP PVFQRRFYHF  
HLPENKKKPL IG

## **[ ANTIBODY SPECIFICITY ]**

The antibody is a rabbit polyclonal antibody raised against CDH5. It has been selected for its ability to recognize CDH5 in immunohistochemical staining and western blotting.

## **[ APPLICATIONS ]**

Western blotting: 1:100-400

Immunocytochemistry in formalin fixed cells: 1:100-500

Immunohistochemistry in formalin fixed frozen section: 1:100-500

Immunohistochemistry in paraffin section: 1:50-200

Enzyme-linked Immunosorbent Assay: 1:100-200

Optimal working dilutions must be determined by end user.

## **[ CONTENTS ]**

**Form & Buffer:** Supplied as solution form in PBS, pH7.4, containing 0.02% NaN<sub>3</sub>, 50% glycerol.

## **[ QUALITY CONTROL ]**

**Content:** The quality control contains recombinant CDH5 (Gly59~Gly382) disposed in loading buffer.

**Usage:** 10uL per well when 3,3'-Diaminobenzidine(DAB) as the substrate.  
5uL per well when used in enhanced chemiluminescent (ECL).

**Note:** The quality control is specifically manufactured as the positive control. Not used for other purposes.

**Loading Buffer:** 100mM Tris(pH8.8), 2% SDS, 200mM NaCl, 50% glycerol, BPB 0.01%, NaN<sub>3</sub> 0.02%.

## **[ STORAGE ]**

Store at 4°C for frequent use. Stored at -20°C to -80°C in a manual defrost freezer for one year without detectable loss of activity. Avoid repeated freeze-thaw cycles.