

**PAB300Mu01****Polyclonal Antibody to Glycoprotein V, Platelet (GP5)****Organism Species: Mus musculus (Mouse)****Instruction manual**

FOR IN VITRO USE AND RESEARCH USE ONLY

NOT FOR USE IN CLINICAL DIAGNOSTIC PROCEDURES

9th Edition (Revised in Jul, 2013)

**[ PRODUCT INFORMATION ]****Immunogen:** GP5, Mouse**Clonality:** Polyclonal**Host:** Rabbit**Immunoglobulin Type:** IgG**Purification:** Affinity Chromatography.**Applications:** WB, ICC, IHC-P, IHC-F, ELISA**Concentration:** 200µg/mL**UOM:** 100µg**[ IMMUNOGEN INFORMATION ]****Immunogen:** Recombinant GP5 (Ser246~Glu485) expressed in *E.coli*.**Accession No.:** RPB300Mu01**Sequence:** The target protein is fused with two N-terminal Tags, His-tag and T7-tag and its sequence is listed below.

MGSSHHHHHH SSGLVPRGSH MASMTGGQQM GRGSEF- SLTLS GNLLLESLPPA  
LFLHVSSVSR LTLFENPLEE LPDVLFGEMA GLRELWLNGT HLSTLPAAAF RNLSGLQTLG  
LTRNPRLSAL PRGVFQGLRE LRVLGLHTNA LAELRDDALR GLGHLRQVSL RHNRLRALPR  
TLFRNLSSLE SVQLEHNQLE TLPGDVFAAL PQLTQVLLGH NPWLCDCGLW RFLQWLRHHP  
DILGRDEPPQ CRGPEPRASL SFWELLQGDP WCPDPRSLPL DPSTE

**[ ANTIBODY SPECIFICITY ]**

The antibody is a rabbit polyclonal antibody raised against GP5. It has been selected for its ability to recognize GP5 in immunohistochemical staining and western blotting.

**[ APPLICATIONS ]**

Western blotting: 1:100-400

Immunocytochemistry in formalin fixed cells: 1:100-500

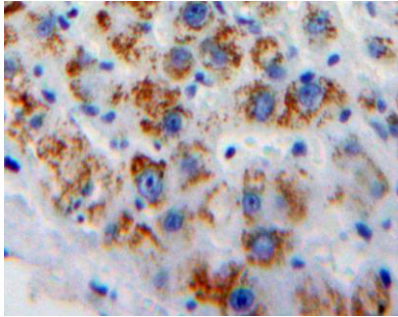
Immunohistochemistry in formalin fixed frozen section: 1:100-500

Immunohistochemistry in paraffin section: 1:50-200

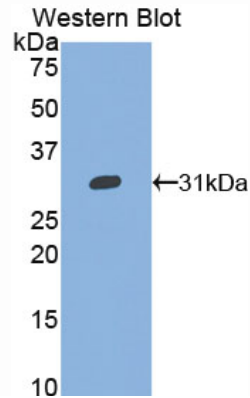
Enzyme-linked Immunosorbent Assay: 1:100-200

Optimal working dilutions must be determined by end user.

## [ IMAGES ]



Used in DAB staining on formalin fixed  
paraffin-embedded Liver tissue



Used in Western Blot, Sample:  
Recombinant GP5, Mouse

## [ CONTENTS ]

**Form & Buffer:** Supplied as solution form in PBS, pH7.4, containing 0.02%  $\text{NaN}_3$ , 50% glycerol.

## [ QUALITY CONTROL ]

**Content:** The quality control contains recombinant GP5 (Ser246~Glu485) disposed in loading buffer.

**Usage:** 10uL per well when 3,3'-Diaminobenzidine(DAB) as the substrate.  
5uL per well when used in enhanced chemiluminescent (ECL).

**Note:** The quality control is specifically manufactured as the positive control. Not used for other purposes.

**Loading Buffer:** 100mM Tris(pH8.8), 2% SDS, 200mM NaCl, 50% glycerol, BPB 0.01%,  $\text{NaN}_3$  0.02%.

## [ STORAGE ]

Store at 4°C for frequent use. Stored at -20°C to -80°C in a manual defrost freezer for one year without detectable loss of activity. Avoid repeated freeze-thaw cycles.