

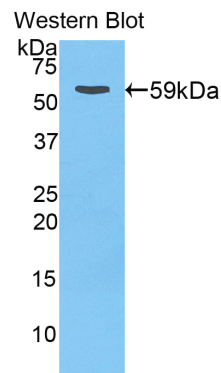
pA91280Ra02
Polyclonal Antibody to Cathepsin D (CTSD)
Organism: Rattus norvegicus (Rat)
Instruction manual

FOR IN VITRO USE AND RESEARCH USE ONLY
NOT FOR USE IN CLINICAL DIAGNOSTIC PROCEDURES

7th Edition (Revised in May, 2013)

[PRODUCT INFORMATION]




Immunogen: CTSD, Rat
Clonality: Polyclonal
Host: Rabbit
Immunoglobulin Type: IgG
Purification: Affinity Chromatography.
Applications: WB, ICC, IHC-P, IHC-F, ELISA
Concentration: 200µg/mL
UOM: 100µg



Sample: Recombinant CTSD, Rat

[IMMUNOGEN INFORMATION]

Immunogen: Recombinant CTSD (His120~Leu407) expressed in *E. coli*.
USCN Accession No.: rP91280Ra02
Sequence: The target protein is fused with two N-terminal Tags, His-tag and GST-tag and its sequence is listed below.
MRNKKFELGL EFPNLPYYID GDVKLTQSMA IIRYIADKHN MLGGCPKERA EISMLEGAVL
DIRYGVSRIA YSKDFETLKV DFLSKLPEML KMFEDRLCHK TYLNGDHVTH PDFMLYDALD
VVLMDPMCL DAFPKLVCFK KRIEAIQID KYLKSSKYIA WPLQGQWQATF GGGDHPKSD
GSTSGSGHHH HHSAGLVPR GSTAIGMKET AAKFERQHM DSPDLGTLEV
LFQGPLGSEF-H HKYNSDKSST YVKNGTSDI HYGSGSLSGY LSQDTVSVPC
KSDLGGIKVE KQIFGEATKQPGVVFAAKF DGILGMGYPF ISVNKVLVPV DNLMKQKLVE
KNIFSFLNR DPTGQPGGEL MLGGTDSRY YHGELSYLNVT RKAYWQVHMD QLEVGSELTL

Unique product Superb quality Client favorite Nicest service  ISO9001:2008;  ISO13485:2003; 

CKGGCEAIVD TGTSLLVGPVDEVKELQKAI GAVPLIQGEY MIPCEKVSSL PIITFKLGGQ
NYELHPEKYI LKVSQAGKTI CLSGFMGMDI PPPSGPLWIL GDVFIGCYT VFDREYNRVG
FAKAATL

[**ANTIBODY SPECIFICITY**]

The antibody is a rabbit polyclonal antibody raised against CTSD. It has been selected for its ability to recognize CTSD in immunohistochemical staining and western blotting.

[**APPLICATIONS**]

Western blotting: 1:100-400

Immunocytochemistry in formalin fixed cells: 1:100-500

Immunohistochemistry in formalin fixed frozen section: 1:100-500

Immunohistochemistry in paraffin section: 1:50-200

Enzyme-linked Immunosorbent Assay: 1:100-200

Optimal working dilutions must be determined by end user.

[**CONTENTS**]

Form & Buffer: Supplied as solution form in PBS, pH7.4, containing 0.02% NaN₃, 50% glycerol.

[**QUALITY CONTROL**]

Content: The quality control contains recombinant CTSD (His120~Leu407) disposed in loading buffer.



Usage: 10uL per well when 3,3'-Diaminobenzidine(DAB) as the substrate.
5uL per well when used in enhanced chemiluminescent (ECL).

Note: The quality control is specifically manufactured as the positive control. Not used for other purposes.

Loading Buffer: 100mM Tris(pH8.8), 2% SDS, 200mM NaCl, 50% glycerol, BPB 0.01%, NaN₃ 0.02%.

[**STORAGE**]

Store at 4°C for frequent use. Stored at -20°C to -80°C in a manual defrost freezer for one year without detectable loss of activity. Avoid repeated freeze-thaw cycles.

Unique product Superb quality Client favorite Nicest service  ISO9001:2008;  ISO13485:2003; 