

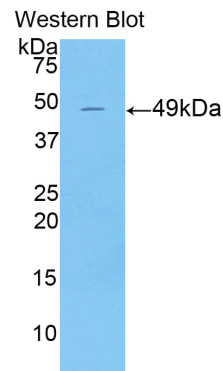
**A91231Mu01**  
**Polyclonal Antibody to Keratin 18 (KRT18)**  
**Organism: Mus musculus (Mouse)**  
***Instruction manual***

FOR IN VITRO USE AND RESEARCH USE ONLY  
NOT FOR USE IN CLINICAL DIAGNOSTIC PROCEDURES

6th Edition (Revised in March, 2013)

**[ PRODUCT INFORMATION ]**

**Immunogen:** KRT18, Mouse  
**Clonality:** Polyclonal  
**Host:** Rabbit  
**Immunoglobulin Type:** IgG  
**Purification:** Affinity Chromatography.  
**Applications:** WB, ICC, IHC-P, IHC-F  
**Concentration:** 200µg/mL  
**UOM:** 100µg






*Sample: Recombinant KRT18, Mouse*

**[ IMMUNOGEN INFORMATION ]**

**Immunogen:** Recombinant KRT18 (Met1~His423) expressed in *E.coli*.  
**USCN Accession No.:** P91231Mu01  
**Sequence:** The target protein is fused with N-terminal His-Tag and its sequence is listed below.

MGHHHHHHSGSEF- MSFTTRSTTF STNYRSLGSV RTPSQVRPA SSAASVYAGA  
GGSGSRISVS RSVWGGSVGS AGLAGMGGIQ TEKETMQDLN DRLASYLDKV  
KSLETENRRL ESKIREHLEK KGPQGV RDWG HYFKIIEDLR AQIFANSVDN ARIVLQIDNA  
RLAADDFRVK YETELAMRQS VESDIHGLRK VVDDTNITRL QLETEIEALK EELLFMKNKH  
EEEVQGLEAQ IASSGLTVEV DAPKSQDLSK IMADIRAQYE ALAQKNREEL DKYWSQQIEE  
STTVVTTKSA EIRDAETTLT ELRRTLQTL E IDLDSMKNQN INLENSLGDV EARYKAQMEQ  
LNGVLLHLES ELAQTRAEGQ RQAQEYEALL NIKVKLEAEI ATYRRILLEDG EDFSLNDALD  
SSNSMQTVQK TTTRKIVDGR VVSETNDTRV LRH

**Unique product Superb quality Client favorite Nicest service**  ISO9001:2008 ;  ISO13485:2003 ; 

## [ ANTIBODY SPECIFICITY ]

The antibody is a rabbit polyclonal antibody raised against KRT18. It has been selected for its ability to recognize KRT18 in immunohistochemical staining and western blotting.

## [ APPLICATIONS ]

Western blotting: 1:100-400

Immunocytochemistry in formalin fixed cells: 1:100-500

Immunohistochemistry in formalin fixed frozen section: 1:100-500

Immunohistochemistry in paraffin section: 1:50-200

Optimal working dilutions must be determined by end user.

## [ CONTENTS ]

**Form & Buffer:** Supplied as solution form in PBS, pH7.4, containing 0.02% NaN<sub>3</sub>, 50% glycerol.

## [ QUALITY CONTROL ]

**Content:** The quality control contains recombinant KRT18 (Met1~His423) disposed in loading buffer.

**Usage:** 10uL per well when 3,3'-Diaminobenzidine(DAB) as the substrate.  
5uL per well when used in enhanced chemiluminescent (ECL).

**Note:** The quality control is specifically manufactured as the positive control. Not used for other purposes.

**Loading Buffer:** 100mM Tris(pH8.8), 2% SDS, 200mM NaCl, 50% glycerol, BPB 0.01%, NaN<sub>3</sub> 0.02%.

## [ STORAGE ]

Store at 4°C for frequent use. Stored at -20°C to -80°C in a manual defrost freezer for one year without detectable loss of activity. Avoid repeated freeze-thaw cycles.