

PAB215Bo01

Polyclonal Antibody to Fibrinogen Beta (FGb)

Organism Species: Bos taurus; Bovine (Cattle)

Instruction manual

FOR IN VITRO USE AND RESEARCH USE ONLY
NOT FOR USE IN CLINICAL DIAGNOSTIC PROCEDURES

9th Edition (Revised in Jul, 2013)

[PRODUCT INFORMATION]

Immunogen: FGb, Bovine

Clonality: Polyclonal

Host: Rabbit

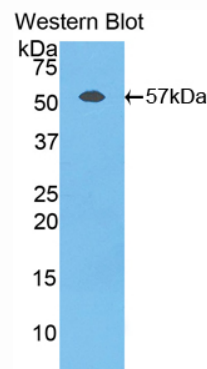
Immunoglobulin Type: IgG

Purification: Affinity Chromatography.

Applications: WB, ICC, IHC-P, IHC-F, ELISA

Concentration: 200µg/mL

UOM: 100µg



Sample: Recombinant FGb, Bovine

[IMMUNOGEN INFORMATION]

Immunogen: Recombinant FGb (Gly49~Gln495) expressed in *E.coli*.

Accession No.: RPB215Bo01

Sequence: The target protein is fused with two N-terminal Tags, His-tag and S-tag and its sequence is listed below.

MHHHHHHSSG LVPRGSGMKE TAAAKFERQH MDSPDLGTDD DDKAMADIGS EF-
GHRPYDKKK EEAPSLRPVP PPISGGGYRA RPATATVGQK KVERKPPDAD GCLHADPDLG
VLCPTGCKLQ DTLVRQERPI RKSIEDLRNT VDSVSRTSSS TFQYITLLKN MWKGRQNQVQ
DNENVVNEYS SHLEKHQLYI DETVKNNIPT KLRVLSILE NLRSKIQKLE SDVSTQMEYC
RTPCTVTCNI PVVSGKECEK IIRNEGETSE MYLIQPEDSS KPYRVYCDMK TEKGGWTVIQ
NRQDGSVDFG RKWDPYKQGF GNIATNAEGK KYCGVPGEYW LGNDRISQLT NMGPTKLLIE
MEDWKGDKVT ALYEGFTVQN EANKYQLSVS KYKGTAGNAL IEGASQLVGE NRTMTIHNSM
FFSTYDRDND GWKTTDPRKQ CSKEDGGGWW YNRCHAANPN GRYYWGGAYT
WDMAKHGTDD GVVWMNWQGS WYSMKKMSMK IRPYFPEQ

[ANTIBODY SPECIFICITY]

The antibody is a rabbit polyclonal antibody raised against FGb. It has been selected for its ability to recognize FGb in immunohistochemical staining and western blotting.

[APPLICATIONS]

Western blotting: 1:100-400

Immunocytochemistry in formalin fixed cells: 1:100-500

Immunohistochemistry in formalin fixed frozen section: 1:100-500

Immunohistochemistry in paraffin section: 1:50-200

Enzyme-linked Immunosorbent Assay: 1:100-200

Optimal working dilutions must be determined by end user.

[CONTENTS]

Form & Buffer: Supplied as solution form in PBS, pH7.4, containing 0.02% NaN₃, 50% glycerol.

[QUALITY CONTROL]

Content: The quality control is from bovine liver extract known to contain the target protein FGb, disposed in loading buffer.

Usage: 10uL per well when 3,3'-Diaminobenzidine(DAB) as the substrate.
5uL per well when used in enhanced chemiluminescent (ECL).

Note: The quality control is specifically manufactured as the positive control. Not used for other purposes.

Loading Buffer: 100mM Tris(pH8.8), 2% SDS, 200mM NaCl, 50% glycerol, BPB 0.01%, NaN₃ 0.02%.

[STORAGE]

Store at 4°C for frequent use. Stored at -20°C to -80°C in a manual defrost freezer for one year without detectable loss of activity. Avoid repeated freeze-thaw cycles.