

PAB091Mu01

Polyclonal Antibody to Alkaline Phosphatase, Liver/Bone/Kidney (ALPL)

Organism Species: *Mus musculus* (Mouse)

Instruction manual

FOR IN VITRO USE AND RESEARCH USE ONLY
NOT FOR USE IN CLINICAL DIAGNOSTIC PROCEDURES

9th Edition (Revised in Jul, 2013)

[**PRODUCT INFORMATION**]

Immunogen: ALPL, Mouse

Clonality: Polyclonal

Host: Rabbit

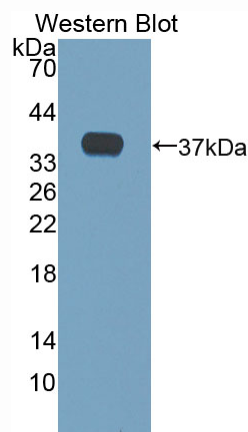
Immunoglobulin Type: IgG

Purification: Affinity Chromatography.

Applications: WB, ICC, IHC-P, IHC-F, ELISA

Concentration: 200µg/mL

UOM: 100µg



Sample: Recombinant ALPL, Mouse

[**IMMUNOGEN INFORMATION**]

Immunogen: Recombinant ALPL (Phe18~Arg335) expressed in *E.coli*.

Accession No.: RPB091Mu01

Sequence: The target protein is fused with N-terminal His-Tag and its sequence is listed below.

MGHHHHHSGSEF-FVP EKERDPSYWR QQAQETLKNA LKLQKLNTNV AKNVIMFLGD
GMGVSTVTAA RILKGQLHHN TGEETRLEMD KFPFVALSKT YNTNAQVPDS AGTATAYLGG
VKANEGTVGV SAATERTRCN TTQGNEVTSI LRWAKDAGKS VGIVTTTRVN HATPSAAYAH
SARDRWYSDN EMPPEALSQG CKDIAYQLMH NIKDIDVIMG GGRKYMYPKN RTDVEYELDE
KARGTRLDGL DLISIWKSFK PRHKHSHYVW NRTELLALDP SRVDYLLGLF EPGDMQYELN
RNNLTDPSLS EMVEVALRIL TKNLKGFLL VEGGR

[ANTIBODY SPECIFICITY]

The antibody is a rabbit polyclonal antibody raised against ALPL. It has been selected for its ability to recognize ALPL in immunohistochemical staining and western blotting.

[APPLICATIONS]

Western blotting: 1:50-400

Immunocytochemistry in formalin fixed cells: 1:50-500

Immunohistochemistry in formalin fixed frozen section: 1:50-500

Immunohistochemistry in paraffin section: 1:10-100

Enzyme-linked Immunosorbent Assay: 1:100-200

Optimal working dilutions must be determined by end user.

[CONTENTS]

Form & Buffer: Supplied as solution form in PBS, pH7.4, containing 0.02% NaN_3 , 50% glycerol.

[QUALITY CONTROL]

Content: The quality control contains recombinant ALPL (Phe18~Arg335) disposed in loading buffer.

Usage: 10uL per well when 3,3'-Diaminobenzidine(DAB) as the substrate.
5uL per well when used in enhanced chemiluminescent (ECL).

Note: The quality control is specifically manufactured as the positive control. Not used for other purposes.

Loading Buffer: 100mM Tris(pH8.8), 2% SDS, 200mM NaCl, 50% glycerol, BPB 0.01%, NaN_3 0.02%.

[STORAGE]

Store at 4°C for frequent use. Stored at -20°C to -80°C in a manual defrost freezer for one year without detectable loss of activity. Avoid repeated freeze-thaw cycles.