

**PAB062Hu01**

**Polyclonal Antibody to Heat Shock 70kDa Protein 1 Like Protein (HSPA1L)**

**Organism Species: Homo sapiens (Human)**

***Instruction manual***

FOR IN VITRO USE AND RESEARCH USE ONLY  
NOT FOR USE IN CLINICAL DIAGNOSTIC PROCEDURES

9th Edition (Revised in Jul, 2013)

## **[ PRODUCT INFORMATION ]**

**Immunogen:** HSPA1L, Human

**Clonality:** Polyclonal

**Host:** Rabbit

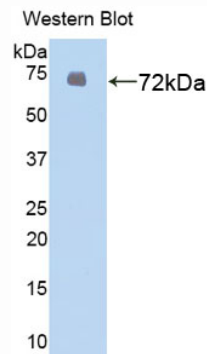
**Immunoglobulin Type:** IgG

**Purification:** Affinity Chromatography.

**Applications:** WB, ICC, IHC-P, IHC-F, ELISA

**Concentration:** 200µg/mL

**UOM:** 100µg



*Sample: Recombinant HSPA1L, Human*

## **[ IMMUNOGEN INFORMATION ]**

**Immunogen:** Recombinant HSPA1L (Met1~Asp641) expressed in *E.coli*.

**USCN Accession No.:** RPB062Hu01

**Sequence:** The target protein is fused with N-terminal His-Tag and its sequence is listed below.

MGHHHHHHSGSEF-MATAKGIAIG IDLGTTYSCV GVFQHGKVEI IANDQGNRTT  
PSYVAFTDTE RLIGDAAKNQ VAMNPQNTVF DAKRLIGRKF NDPVVQADMK LWPQVINEG  
GKPKVLVSYK GENKAFYPEE ISSMVLTKLK ETAEFLGHP VTNAVITVPA YFNDSQRQAT  
KDAGVIAGLN VLRIINEPTA AAIAYGLDKG GQGERHVLIF DLGGGTFDVS ILTIDDGIFE  
VKATAGDTHL GGEDFDNRLV SHFVEEFKRK HKKDISQNK RAVRRLRTACE RAKRTLSSST  
QANLEIDSLY EGIDFYTSIT RARFEELCAD LFRGTLEPVE KALRDAKMDK AKIHDIVLVG  
GSTRIPKVQR LLQDYFNDRD LNKSINPDEA VAYGAAVQAA ILMGDKSEKV QDLLLLDVAP  
LSLGLTAGG VMTALIKRNS TIPTKQTQIF TTYSDNQPGV LIQVYEGERA MTKDNLLGR  
FDLTGIPPAP RGVPQIEVTF DIDANGILNV TATDKSTGKV NKITITNDKG RLSKEEIERM

VLDAEKYKAE DEVQREKIAA KNALESYAFN MKSVVSDEGL KKGISESDKN KILDKCNELL  
SWLEVNQLAE KDEFDHKRKE LEQMCNPIIT KLYQGGCTGP ACGTGYVPGR PATGPTIEEV  
D

## **[ ANTIBODY SPECIFICITY ]**

The antibody is a rabbit polyclonal antibody raised against HSPA1L. It has been selected for its ability to recognize HSPA1L in immunohistochemical staining and western blotting.

## **[ APPLICATIONS ]**

Western blotting: 1:100-400

Immunocytochemistry in formalin fixed cells: 1:100-500

Immunohistochemistry in formalin fixed frozen section: 1:100-500

Immunohistochemistry in paraffin section: 1:50-200

Enzyme-linked Immunosorbent Assay: 1:100-200

Optimal working dilutions must be determined by end user.

## **[ CONTENTS ]**

**Form & Buffer:** Supplied as solution form in PBS, pH7.4, containing 0.02% NaN<sub>3</sub>, 50% glycerol.

## **[ QUALITY CONTROL ]**

**Content:** The quality control contains recombinant HSPA1L (Met1~Asp641) disposed in loading buffer.

**Usage:** 10uL per well when 3,3'-Diaminobenzidine(DAB) as the substrate.  
5uL per well when used in enhanced chemiluminescent (ECL).

**Note:** The quality control is specifically manufactured as the positive control. Not used for other purposes.

**Loading Buffer:** 100mM Tris(pH8.8), 2% SDS, 200mM NaCl, 50% glycerol, BPB 0.01%, NaN<sub>3</sub> 0.02%.

## **[ STORAGE ]**

Store at 4°C for frequent use. Stored at -20°C to -80°C in a manual defrost freezer for one year without detectable loss of activity. Avoid repeated freeze-thaw cycles.