

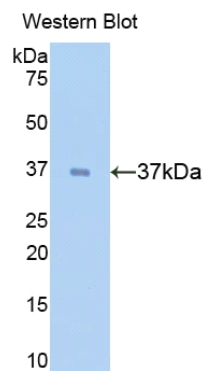
**A91039Hu01**  
**Antibody to Surfactant Associated Protein D (SPD)**  
**Organism: Homo sapiens (Human)**  
*Instruction manual*

FOR IN VITRO USE AND RESEARCH USE ONLY  
 NOT FOR USE IN CLINICAL DIAGNOSTIC PROCEDURES

6th Edition (Revised in March, 2013)

**[ PRODUCT INFORMATION ]**

**Immunogen:** SPD, Human  
**Clonality:** Polyclonal  
**Host:** Rabbit  
**Immunoglobulin Type:** IgG  
**Purification:** Affinity Chromatography.  
**Applications:** WB, ICC, IHC-P, IHC-F  
**Concentration:** 200µg/mL  
**UOM:** 100µg



*Sample: Recombinant SPD, Human*

**[ IMMUNOGEN INFORMATION ]**

**Immunogen:** Recombinant SPD (Ala21~Phe375) expressed in *E. coli*.  
**USCN Accession No.:** P91039Hu01

**Sequence:** The target protein is fused with N-terminal His-Tag and its sequence is listed below.

MGHHHHHSGSEF- AEMKTYSHRT MPSACTLVMC SSVESGLPGR DGRDGREGPR  
 GEKGDPLPG AAGQAGMPGQ AGPVGPKGDN GSVGEPGPKG DTGPSGPPGP  
 PGVPGPAGRE GPLGKQGNIG PQGKPGPKGE AGPKGEVGAP GMQGSAGARG  
 LAGPKGERGV PGERGVPNT GAAGSAGAMG PQGSPGARGP PGLKGDKGIP  
 GDKGAKGESG LPDVASLRQQ VEALQGQVQH LQAQFSQYKK VELFPNGQSV GEKIFKTAGF  
 VKPFTEAQLL CTQAGGQLAS PRSAAENAAL QLLVAKNEA AFLSMTDSKT EGKFTYPTGE  
 SLVYSNWAPG EPNDGGSED CVEIFTNGKW NDRACGEKRL VVCEF

*Unique product Superb quality Client favorite Nicest service*  ISO9001:2008;  ISO13485:2003;  CE

## [ ANTIBODY SPECIFICITY ]

The antibody is a rabbit polyclonal antibody raised against SPD. It has been selected for its ability to recognize SPD in immunohistochemical staining and western blotting.

## [ APPLICATIONS ]

Western blotting: 1:100-400

Immunocytochemistry in formalin fixed cells: 1:100-500

Immunohistochemistry in formalin fixed frozen section: 1:100-500

Immunohistochemistry in paraffin section: 1:50-200

Optimal working dilutions must be determined by end user.

## [ CONTENTS ]

**Form & Buffer:** Supplied as solution form in PBS, pH7.4, containing 0.02% NaN<sub>3</sub>, 50% glycerol.

## [ QUALITY CONTROL ]

**Content:** The quality control contains recombinant SPD (Ala21~Phe375) disposed in loading buffer.

**Usage:** 10uL per well when 3,3'-Diaminobenzidine(DAB) as the substrate.  
5uL per well when used in enhanced chemiluminescent (ECL).

**Note:** The quality control is specifically manufactured as the positive control. Not used for other purposes.

**Loading Buffer:** 100mM Tris(pH8.8), 2% SDS, 200mM NaCl, 50% glycerol, BPB 0.01%, NaN<sub>3</sub> 0.02%.

## [ STORAGE ]

Store at 4°C for frequent use. Stored at -20°C to -80°C in a manual defrost freezer for one year without detectable loss of activity. Avoid repeated freeze-thaw cycles.