

**PAB030Hu01****Polyclonal Antibody to Tyrosine Phosphatase Receptor Type C (PTPRC)****Organism Species: Homo sapiens (Human)****Instruction manual**

FOR IN VITRO USE AND RESEARCH USE ONLY

NOT FOR USE IN CLINICAL DIAGNOSTIC PROCEDURES

9th Edition (Revised in Jul, 2013)

**[ PRODUCT INFORMATION ]****Immunogen:** PTPRC, Human**Clonality:** Polyclonal**Host:** Rabbit**Immunoglobulin Type:** IgG**Purification:** Affinity Chromatography.**Applications:** WB, ICC, IHC-P, IHC-F, ELISA**Concentration:** 200µg/mL**UOM:** 100µg**[ IMMUNOGEN INFORMATION ]****Immunogen:** Recombinant PTPRC (Asp193~Lys575) expressed in *E.coli*.**Accession No.:** RPB030Hu01**Sequence:** The target protein is fused with N-terminal His-Tag and its sequence is listed below.

MGHHHHHSGSEF-DAYLNASE TTTLSPSGSA VISTTTIATT PSKPTCDEKY ANITVDYLYN  
KETKLFTAKL NVNENVECGN NTCTNNEVHN LTECKNASVS ISHNSCTAPD KTLILDVPPG  
VEKFQLHDCT QVEKADTTIC LKWKNIETFT CDTQNIYRF QCGNMIFDNK EIKLENLEPE  
HEYKCDSEIL YNNHKFTNAS KIIKTDFGSP GEPQIIFCRS EAAHQGVITW NPPQRSFHNF  
TLCYIKETEK DCLNLDKNLI KYDLQNLKPY TKYVLSLHAY IIAKVQRNGS AAMCHFTTKS  
APPSQVWNMT VSMTSDNSMH VKCRPPRDRN GIPHERYHLEV EAGNTLVRNE  
SHKNCDFRVK DLQYSTDYTF KAYFHNGDYP GEPFILHHST SYNSK

**[ ANTIBODY SPECIFICITY ]**

The antibody is a rabbit polyclonal antibody raised against PTPRC. It has been selected for its ability to recognize PTPRC in immunohistochemical staining and western blotting.

**[ APPLICATIONS ]**

Western blotting: 1:100-400

Immunocytochemistry in formalin fixed cells: 1:100-500

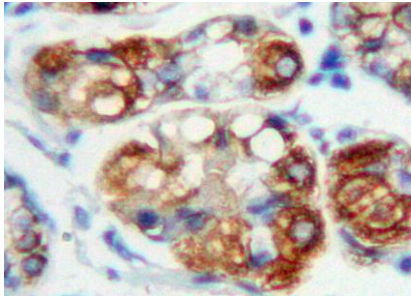
Immunohistochemistry in formalin fixed frozen section: 1:100-500

Immunohistochemistry in paraffin section: 1:50-200

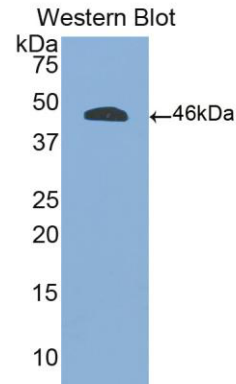
Enzyme-linked Immunosorbent Assay: 1:100-200

Optimal working dilutions must be determined by end user.

## [ **IMAGES** ]



Used in DAB staining on formalin fixed paraffin-embedded Stomach tissue



Used in Western Blot, Sample: Recombinant PTPRC, Human

## [ **CONTENTS** ]

**Form & Buffer:** Supplied as solution form in PBS, pH7.4, containing 0.02%  $\text{NaN}_3$ , 50% glycerol.

## [ **QUALITY CONTROL** ]

**Content:** The quality control contains recombinant PTPRC (Asp193~Lys575) disposed in loading buffer.

**Usage:** 10uL per well when 3,3'-Diaminobenzidine(DAB) as the substrate.  
5uL per well when used in enhanced chemiluminescent (ECL).

**Note:** The quality control is specifically manufactured as the positive control. Not used for other purposes.

**Loading Buffer:** 100mM Tris(pH8.8), 2% SDS, 200mM NaCl, 50% glycerol, BPB 0.01%,  $\text{NaN}_3$  0.02%.

## [ **STORAGE** ]

Store at 4°C for frequent use. Stored at -20°C to -80°C in a manual defrost freezer for one year without detectable loss of activity. Avoid repeated freeze-thaw cycles.