

PAB028Hu01

Polyclonal Antibody to Albumin (ALB)

Organism Species: Homo sapiens (Human)

Instruction manual

FOR IN VITRO USE AND RESEARCH USE ONLY

NOT FOR USE IN CLINICAL DIAGNOSTIC PROCEDURES

9th Edition (Revised in Jul, 2013)

[PRODUCT INFORMATION]

Immunogen: ALB, Human

Clonality: Polyclonal

Host: Rabbit

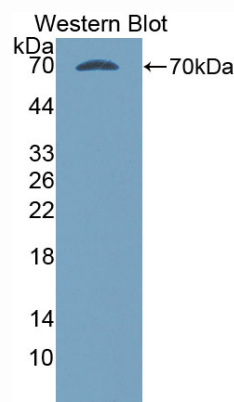
Immunoglobulin Type: IgG

Purification: Affinity Chromatography.

Applications: WB, ICC, IHC-P, IHC-F, ELISA

Concentration: 200µg/mL

UOM: 100µg



Sample: Recombinant ALB, Human

[IMMUNOGEN INFORMATION]

Immunogen: Recombinant ALB (Asp25~Leu609) expressed in Yeast.

Accession No.: RPB028Hu51

Sequence: The target protein is fused with N-terminal His-Tag and its sequence is listed below.

YVEFHSHHHH-DAHKSE VAHRFKDLGE ENFKALVLIA FAQYLQQCPF EDHVKLVNEV
TEFAKTCVAD ESAENCDKSL HTLFGDKLCT VATLRETYGE MADCCAQKQP ERNECFLQHK
DDNPNLPRLV RPEVDVMCTA FHDNEETFLK KYLYEIARRH PYFYAPELLF FAKRYKAAFT
ECCQAADKAA CLLPKLDELRL DEGKASSAKQ RLKCASLQKF GERAFAKAWAV ARLSQRFPKA
EFAEVSKLVT DLTKVHTECC HGDLLCADD RADLAKYICE NQDSISSKLN ECCEKPLLEK
SHCIAEVEND EMPADLPSLA ADFVESKDVC KNYAEAKDVF LGMFLYEYAR RHPDYSVLL
LRLAKTYETT LEKCCAAADP HECYAKVFDE FKPLVEEPQN LIQNCLELFE QLGEYKFNQA

LLVRYTKKVP QVSTPTLVEV SRNLGKVGSK CCKHPEAKRM PCAEDYLSVV LNQLCVLHEK
TPVSDRVTKC CTESLVNRRP CFSALEVDET YVPKEFNAET FTFHADICTL SEKERRQKKQ
TALVELVKHK PKATKEQLKA VMDDFAAFVE KCCKADDKET CFAEEGKKLV AASQAALGL

[ANTIBODY SPECIFICITY]

The antibody is a rabbit polyclonal antibody raised against ALB. It has been selected for its ability to recognize ALB in immunohistochemical staining and western blotting.

[APPLICATIONS]

Western blotting: 1:100-400

Immunocytochemistry in formalin fixed cells: 1:100-500

Immunohistochemistry in formalin fixed frozen section: 1:100-500

Immunohistochemistry in paraffin section: 1:50-200

Enzyme-linked Immunosorbent Assay: 1:100-200

Optimal working dilutions must be determined by end user.

[CONTENTS]

Form & Buffer: Supplied as solution form in PBS, pH7.4, containing 0.02% NaN₃, 50% glycerol.

[QUALITY CONTROL]

Content: The quality control contains recombinant ALB (Asp25~Leu609) disposed in loading buffer.

Usage: 10uL per well when 3,3'-Diaminobenzidine(DAB) as the substrate.
5uL per well when used in enhanced chemiluminescent (ECL).

Note: The quality control is specifically manufactured as the positive control. Not used for other purposes.

Loading Buffer: 100mM Tris(pH8.8), 2% SDS, 200mM NaCl, 50% glycerol, BPB 0.01%, NaN₃ 0.02%.

[STORAGE]

Store at 4°C for frequent use. Stored at -20°C to -80°C in a manual defrost freezer for one year without detectable loss of activity. Avoid repeated freeze-thaw cycles.