

**PAB017Po01**

**Polyclonal Antibody to Alpha-2-Macroglobulin (a2M)**

**Organism: *Sus scrofa*; Porcine (Pig)**

***Instruction manual***

FOR IN VITRO USE AND RESEARCH USE ONLY  
NOT FOR USE IN CLINICAL DIAGNOSTIC PROCEDURES

8th Edition (Revised in Jun, 2013)

## **[ PRODUCT INFORMATION ]**

**Immunogen:** a2M, Porcine

**Clonality:** Polyclonal

**Host:** Rabbit

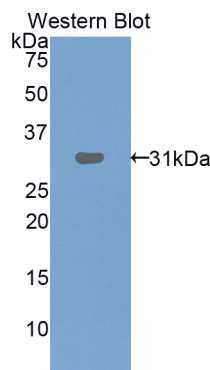
**Immunoglobulin Type:** IgG

**Purification:** Affinity Chromatography.

**Applications:** WB, ICC, IHC-P, IHC-F, ELISA

**Concentration:** 200µg/mL

**UOM:** 100µg



*Sample: Recombinant a2M, Porcine*

## **[ IMMUNOGEN INFORMATION ]**

**Immunogen:** Recombinant a2M (Lys1097~Cys1357) expressed in *E.coli*.

**USCN Accession No.:** RPB017Po01

**Sequence:** The target protein is fused with N-terminal His-Tag and its sequence is listed below.

MGHHHHHSG SEFELRRQ-KGGV DDEVTL SAYV TIALLEIPLA VTHPVVRSAL  
FCLETAWKSA QEGSQGSHVY TKALLAYAFA LAGNQEKKKE VLQSLDAEAV KEGDSIHWTR  
PRKPEAPVQH FYKPRAPSAE VEMTAYVLLT CLTAQSALSS EDLNLATLIM KWITKQQNSQ  
GGFSSTQDTV VALHALSKYG AATFTRTGKA AEVTIQSTGT FSKKFQVNND NLLLLQQISL  
PAVPGEYSIT ATGKGCVYLQ TSLKYNILPK KEDFPFALEV QTLPTC

## [ **ANTIBODY SPECIFICITY** ]

The antibody is a rabbit polyclonal antibody raised against a2M. It has been selected for its ability to recognize a2M in immunohistochemical staining and western blotting.

## [ **APPLICATIONS** ]

Western blotting: 1:100-400

Immunocytochemistry in formalin fixed cells: 1:100-500

Immunohistochemistry in formalin fixed frozen section: 1:100-500

Immunohistochemistry in paraffin section: 1:50-200

Enzyme-linked Immunosorbent Assay: 1:100-200

Optimal working dilutions must be determined by end user.

## [ **CONTENTS** ]

**Form & Buffer:** Supplied as solution form in PBS, pH7.4, containing 0.02% NaN<sub>3</sub>, 50% glycerol.

## [ **QUALITY CONTROL** ]

**Content:** The quality control contains recombinant a2M (Lys1097~Cys1357) disposed in loading buffer.

**Usage:** 10uL per well when 3,3'-Diaminobenzidine(DAB) as the substrate.  
5uL per well when used in enhanced chemiluminescent (ECL).

**Note:** The quality control is specifically manufactured as the positive control. Not used for other purposes.

**Loading Buffer:** 100mM Tris(pH8.8), 2% SDS, 200mM NaCl, 50% glycerol, BPB 0.01%, NaN<sub>3</sub> 0.02%.

## [ **STORAGE** ]

Store at 4°C for frequent use. Stored at -20°C to -80°C in a manual defrost freezer for one year without detectable loss of activity. Avoid repeated freeze-thaw cycles.