

PAB010Mu01
Polyclonal Antibody
To Low Density Lipoprotein Receptor Related Protein 1 (LRP1)
Organism Species: Mus musculus (Mouse)
Instruction manual

FOR IN VITRO USE AND RESEARCH USE ONLY
NOT FOR USE IN CLINICAL DIAGNOSTIC PROCEDURES

9th Edition (Revised in Jul, 2013)

[PRODUCT INFORMATION]

Immunogen: LRP1, Mouse

Clonality: Polyclonal

Host: Rabbit

Immunoglobulin Type: IgG

Purification: Affinity Chromatography.

Applications: WB, ICC, IHC-P, IHC-F, ELISA

Concentration: 200µg/mL

UOM: 100µg

[IMMUNOGEN INFORMATION]

Immunogen: Recombinant LRP1 (Ile692~Cys962) expressed in *E.coli*.

Accession No.: RPB010Mu01

Sequence: The target protein is fused with two N-terminal Tags, His-tag and T7-tag and its sequence is listed below.

MGSSHHHHHH SSGLVPRGSH MASMTGGQQM GRGSEF- IFVTSKTVL WPNGLSLDIP
AGRLYWVDAF YDRIETILLN GTDRKIVYEG PELNHAFGLC HHGNYLFWTE YRSGSVYRLE
RGVAGAPPTV TLLRSERPPI FEIRMYDAQQ QQVGTNKCRV NNGGCSLCL ATPGSRQCAC
AEDQVLDTDG VTCLANPSYV PPPQCQPGEF ACANNRCIQE RWKCDGDND C
LDNSDEAPAL CHQHTCPSDR FKCNNRCIP NRWLCDGDND CGNSEDESNA
TCSARTCPPN QFSCASGRCI PISWTCDLDD DC

[ANTIBODY SPECIFICITY]

The antibody is a rabbit polyclonal antibody raised against LRP1. It has been selected for its ability to recognize LRP1 in immunohistochemical staining and western blotting.

[APPLICATIONS]

Western blotting: 1:100-400

Immunocytochemistry in formalin fixed cells: 1:100-500

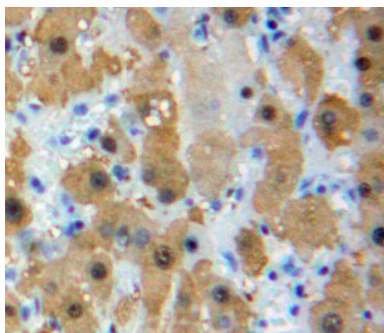
Immunohistochemistry in formalin fixed frozen section: 1:100-500

Immunohistochemistry in paraffin section: 1:50-200

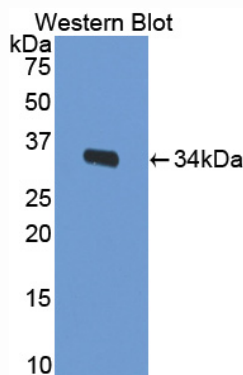
Enzyme-linked Immunosorbent Assay: 1:100-200

Optimal working dilutions must be determined by end user.

[**IMAGES**]



Used in DAB staining on formalin fixed
paraffin-embedded Liver tissue



Used in Western Blot, Sample:
Recombinant LRP1, Mouse

[**CONTENTS**]

Form & Buffer: Supplied as solution form in PBS, pH7.4, containing 0.02% NaN₃, 50% glycerol.

[**QUALITY CONTROL**]

Content: The quality control contains recombinant LRP1 (Ile692~Cys962) disposed in loading buffer.

Usage: 10uL per well when 3,3'-Diaminobenzidine(DAB) as the substrate.
5uL per well when used in enhanced chemiluminescent (ECL).

Note: The quality control is specifically manufactured as the positive control. Not used for other purposes.

Loading Buffer: 100mM Tris(pH8.8), 2% SDS, 200mM NaCl, 50% glycerol, BPB 0.01%, NaN₃ 0.02%.

[**STORAGE**]

Store at 4°C for frequent use. Stored at -20°C to -80°C in a manual defrost freezer for one year without detectable loss of activity. Avoid repeated freeze-thaw cycles.