

**PAA989Hu01****Polyclonal Antibody to Cluster Of Differentiation 160 (CD160)****Organism Species: Homo sapiens (Human)*****Instruction manual***

FOR IN VITRO USE AND RESEARCH USE ONLY

NOT FOR USE IN CLINICAL DIAGNOSTIC PROCEDURES

9th Edition (Revised in Jul, 2013)

**[ PRODUCT INFORMATION ]****Immunogen:** CD160, Human**Clonality:** Polyclonal**Host:** Rabbit**Immunoglobulin Type:** IgG**Purification:** Affinity Chromatography.**Applications:** WB, ICC, IHC-P, IHC-F, ELISA**Concentration:** 200µg/mL**UOM:** 100µg**[ IMMUNOGEN INFORMATION ]****Immunogen:** Recombinant CD160 (Gly37~Asn154) expressed in *E.coli*.**Accession No.:** RPA989Hu01**Sequence:** The target protein is fused with two N-terminal Tags, His-tag and T7-tag and its sequence is listed below.MGSSHHHHHH SSSLVPRGSH MASMTGGQQM GRGSEF- GTRL NLICTVWHKK  
EEAEGFVVFL CKDRSGDCSP ETSLKQLRLK RDPGIDGVGE ISSQLMFTIS QVTPLHSGTY  
QCCARSQKSG IRLQGHFFSI LFTETGNYTV TGLKQRQHLE FSHN**[ ANTIBODY SPECIFICITY ]**

The antibody is a rabbit polyclonal antibody raised against CD160. It has been selected for its ability to recognize CD160 in immunohistochemical staining and western blotting.

**[ APPLICATIONS ]**

Western blotting: 1:100-400

Immunocytochemistry in formalin fixed cells: 1:100-500

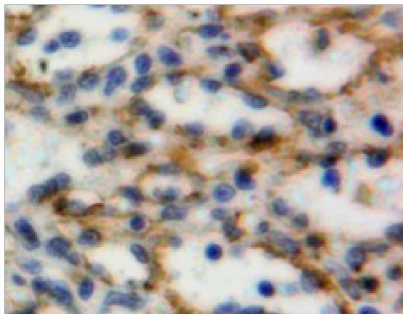
Immunohistochemistry in formalin fixed frozen section: 1:100-500

Immunohistochemistry in paraffin section: 1:50-200

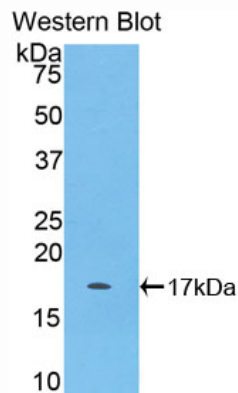
Enzyme-linked Immunosorbent Assay: 1:100-200

Optimal working dilutions must be determined by end user.

## [ IMAGES ]



Used in DAB staining on formalin fixed  
paraffin-embedded Spleen tissue



Used in Western Blot, Sample:  
Recombinant CD160, Human

## [ CONTENTS ]

**Form & Buffer:** Supplied as solution form in PBS, pH7.4, containing 0.02% NaN<sub>3</sub>, 50% glycerol.

## [ QUALITY CONTROL ]

**Content:** The quality control contains recombinant CD160 (Gly37~Asn154) disposed in loading buffer.

**Usage:** 10uL per well when 3,3'-Diaminobenzidine(DAB) as the substrate.  
5uL per well when used in enhanced chemiluminescent (ECL).

**Note:** The quality control is specifically manufactured as the positive control. Not used for other purposes.

**Loading Buffer:** 100mM Tris(pH8.8), 2% SDS, 200mM NaCl, 50% glycerol, BPB 0.01%, NaN<sub>3</sub> 0.02%.

## [ STORAGE ]

Store at 4°C for frequent use. Stored at -20°C to -80°C in a manual defrost freezer for one year without detectable loss of activity. Avoid repeated freeze-thaw cycles.