

**PAA895Hu03****Polyclonal Antibody to Insulin Receptor (ISR)****Organism Species: Homo sapiens (Human)****Instruction manual**

FOR IN VITRO USE AND RESEARCH USE ONLY

NOT FOR USE IN CLINICAL DIAGNOSTIC PROCEDURES

9th Edition (Revised in Jul, 2013)

**[ PRODUCT INFORMATION ]****Immunogen:** ISR, Human**Clonality:** Polyclonal**Host:** Rabbit**Immunoglobulin Type:** IgG**Purification:** Affinity Chromatography.**Applications:** WB, ICC, IHC-P, IHC-F, ELISA**Concentration:** 200µg/mL**UOM:** 100µg**[ IMMUNOGEN INFORMATION ]****Immunogen:** Recombinant ISR (Pro622~Thr945) expressed in *E.coli*.**Accession No.:** RPA895Hu03**Sequence:** The target protein is fused with N-terminal His-Tag and its sequence is listed below.

MGHHHHHHSGSEF -PSVPLDPIS VSNSSSQIIL KWKPPSDPNG NITHYLVFWE  
RQAEDSELFE LDYCLKGLKL PSRTWSPPEF SEDSQKHNQS EYEDSAGECC SCPKTDSQIL  
KELEESSFRK TFEDYLHNVV FVPRKTSSGT GAEDPRPSRK RRSLGDVGNV TVAVPTVAAF  
PNTSSTSVPT SPEEHRPF EK VVNKESLVIS GLRHFTGYRI ELQACNQDTP EERCSVAAYV  
SARTMPEAKA DDIVGPVTHE IFENNVVHLM WQEPKEPNGL IVLYEVSYRR YGDEELHL CV  
SRKHFA LERG CRLRGLSPGN YSVRIRATSL AGNGSWTEPT YFYVT

**[ ANTIBODY SPECIFICITY ]**

The antibody is a rabbit polyclonal antibody raised against ISR. It has been selected for its ability to recognize ISR in immunohistochemical staining and western blotting.

**[ APPLICATIONS ]**

Western blotting: 1:100-400

Immunocytochemistry in formalin fixed cells: 1:100-500

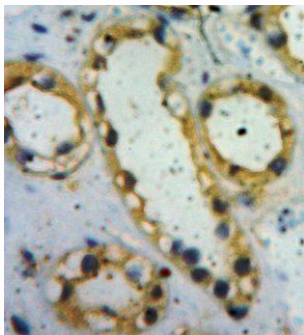
Immunohistochemistry in formalin fixed frozen section: 1:100-500

Immunohistochemistry in paraffin section: 1:50-200

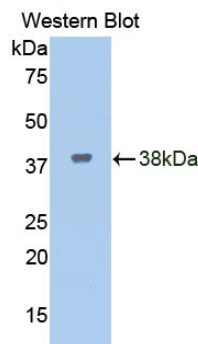
Enzyme-linked Immunosorbent Assay: 1:100-200

Optimal working dilutions must be determined by end user.

## [ IMAGES ]



Used in DAB staining on formalin fixed  
paraffin- embedded Kidney tissue



Used in Western Blot ,Sample:  
Recombinant ISR,Human

## [ CONTENTS ]

**Form & Buffer:** Supplied as solution form in PBS, pH7.4, containing 0.02% NaN<sub>3</sub>, 50% glycerol.

## [ QUALITY CONTROL ]

**Content:** The quality control contains recombinant ISR (Pro622~Thr945) disposed in loading buffer.

**Usage:** 10uL per well when 3,3'-Diaminobenzidine(DAB) as the substrate.  
5uL per well when used in enhanced chemiluminescent (ECL).

**Note:** The quality control is specifically manufactured as the positive control. Not used for other purposes.

**Loading Buffer:** 100mM Tris(pH8.8), 2% SDS, 200mM NaCl, 50% glycerol, BPB 0.01%, NaN<sub>3</sub> 0.02%.

## [ STORAGE ]

Store at 4°C for frequent use. Stored at -20°C to -80°C in a manual defrost freezer for one year without detectable loss of activity. Avoid repeated freeze-thaw cycles.