

PAA888Hu01

Polyclonal Antibody to Complement Component 4 (C4)

Organism Species: Homo sapiens (Human)

Instruction manual

FOR IN VITRO USE AND RESEARCH USE ONLY
NOT FOR USE IN CLINICAL DIAGNOSTIC PROCEDURES

9th Edition (Revised in Jul, 2013)

[PRODUCT INFORMATION]

Immunogen: C4, Human

Clonality: Polyclonal

Host: Rabbit

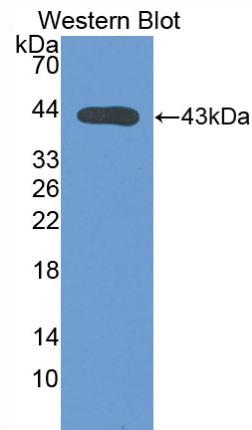
Immunoglobulin Type: IgG

Purification: Affinity Chromatography.

Applications: WB, ICC, IHC-P, IHC-F, ELISA

Concentration: 200µg/mL

UOM: 100µg



Sample: Recombinant C4, Human

[IMMUNOGEN INFORMATION]

Immunogen: Recombinant C4 (Asn975~Arg1336) expressed in *E.coli*.

Accession No.: RPA888Hu01

Sequence: The target protein is fused with two N-terminal Tags, His-tag and T7-tag and its sequence is listed below.

MGSSHHHHHH SGLVPRGSH MASMTGGQQM GRGSEF-NSYVRV TASDPLDTLG
SEGALSPGGV ASLLRLPRGC GEQTMIIY LAP TLAASRYLDK TEQWSTLPPE TKDHAVDLIQ
KGYMRIQQFR KADGSYAAWL SRDSSTWLTA FVLKVLSLAQ EQVGG SPEKL QETSNWLLSQ
QQADGSFQDP CPVLDRSMQG GLVGND ETV LTAFTIALH HGLAVFQDEG AEPLKQRVEA
SISKANSFLG EKASAGLLGA HAAAITAYAL TLTKAPVDLL GVAHNLMAM AQETGDNLYW
GSVTGSQ SNA VSPTPAPRNP SDPMPQAPAL WIETTAYALL HLLLHEGKAE MADQASAWLT
RQGSFQGGFR STQDTVIALD ALSAYWIASH TTEERGLNVT LSSTGR

[ANTIBODY SPECIFICITY]

The antibody is a rabbit polyclonal antibody raised against C4. It has been selected for its ability to recognize C4 in immunohistochemical staining and western blotting.

[APPLICATIONS]

Western blotting: 1:50-400

Immunocytochemistry in formalin fixed cells: 1:50-500

Immunohistochemistry in formalin fixed frozen section: 1:50-500

Immunohistochemistry in paraffin section: 1:10-100

Enzyme-linked Immunosorbent Assay: 1:100-200

Optimal working dilutions must be determined by end user.

[CONTENTS]

Form & Buffer: Supplied as solution form in PBS, pH7.4, containing 0.02% NaN₃, 50% glycerol.

[STORAGE]

Store at 4°C for frequent use. Stored at -20°C to -80°C in a manual defrost freezer for one year without detectable loss of activity. Avoid repeated freeze-thaw cycles.