

PAA867Mu01

**Polyclonal Antibody to Phospholipase A2, Lipoprotein Associated (LpPLA2)**

**Organism Species: Mus musculus (Mouse)**

***Instruction manual***

FOR IN VITRO USE AND RESEARCH USE ONLY

NOT FOR USE IN CLINICAL DIAGNOSTIC PROCEDURES

## [ **PRODUCT INFORMATION** ]

**Immunogen:** LpPLA2, Mouse

**Clonality:** Polyclonal

**Host:** Rabbit

**Immunoglobulin Type:** IgG

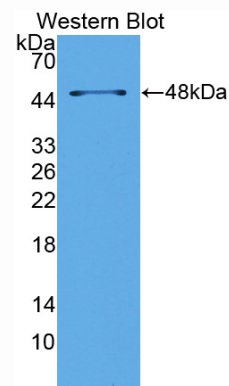
**Purification:** Affinity Chromatography.

**Applications:** WB, ICC, IHC-P, IHC-F, ELISA

**Concentration:** 200µg/mL

**UOM:** 100µg

9th Edition (Revised in Jul, 2013)



Sample: Recombinant LpPLA2, Mouse

## [ **IMMUNOGEN INFORMATION** ]

**Immunogen:** Recombinant LpPLA2 (Phe22~Asn440) expressed in *E.coli*.

**Accession No.:** RPA867Mu01

**Sequence:** The target protein is fused with N-terminal His-Tag and its sequence is listed below.

MGHHHHHSGSEFELRRQ- FHWQDTSSF DFRPSVMFHK LQSVMSAAGS GHSKIPKNG  
SYPVGCTDLM FGYGNESVFV RLYPAQDQG RLDTVWIPNK EYFLGLSIFL GTPSIVGNIL  
HLLYGSLTTP ASWNSPLRTG EKYPLIVFSH GLGAFRTIYS AIGIGLASNG FIVATVEHRD  
RSASATYFFE DQVAAKVENR SWLYLRKVKQ EESESVRKEQ VQQRAIECSR ALSAILDIEH  
GDPKENVLGS AFDMKQLKDA IDETKIALMG HSFGGATVLQ ALSEDQRFRC GVALDPWMPY  
VNEELYSRTL QPLLINSK FQTPKDIAM KKFYQPKER KMITIKSVH QNFDDFTFVT  
GKIIGNKLT LKGEIDSRVAI DLTKASMAF LQKHLGLQKD FDQWDPLVEG DDENLIPGSP  
FDAVTQVPAQ QHSPGSQTQN

## **[ ANTIBODY SPECIFICITY ]**

The antibody is a rabbit polyclonal antibody raised against LpPLA2. It has been selected for its ability to recognize LpPLA2 in immunohistochemical staining and western blotting.

## **[ APPLICATIONS ]**

Western blotting: 1:100-400

Immunocytochemistry in formalin fixed cells: 1:100-500

Immunohistochemistry in formalin fixed frozen section: 1:100-500

Immunohistochemistry in paraffin section: 1:50-200

Enzyme-linked Immunosorbent Assay: 1:100-200

Optimal working dilutions must be determined by end user.

## **[ CONTENTS ]**

**Form & Buffer:** Supplied as solution form in PBS, pH7.4, containing 0.02%  $\text{NaN}_3$ , 50% glycerol.

## **[ QUALITY CONTROL ]**

**Content:** The quality control contains recombinant LpPLA2 (Phe22~Asn440) disposed in loading buffer.

**Usage:** 10uL per well when 3,3'-Diaminobenzidine(DAB) as the substrate.  
5uL per well when used in enhanced chemiluminescent (ECL).

**Note:** The quality control is specifically manufactured as the positive control. Not used for other purposes.

**Loading Buffer:** 100mM Tris(pH8.8), 2% SDS, 200mM NaCl, 50% glycerol, BPB 0.01%,  $\text{NaN}_3$  0.02%.

## **[ STORAGE ]**

Store at 4°C for frequent use. Stored at -20°C to -80°C in a manual defrost freezer for one year without detectable loss of activity. Avoid repeated freeze-thaw cycles.