

PAA861Ra01

Polyclonal Antibody to Complement Component 3 (C3)

Organism Species: Rattus norvegicus (Rat)

Instruction manual

FOR IN VITRO USE AND RESEARCH USE ONLY
NOT FOR USE IN CLINICAL DIAGNOSTIC PROCEDURES

9th Edition (Revised in Jul, 2013)

[PRODUCT INFORMATION]

Immunogen: C3, Rat

Clonality: Polyclonal

Host: Rabbit

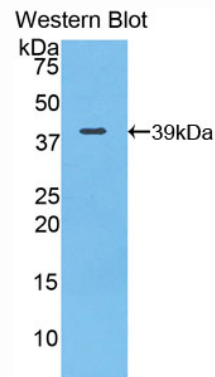
Immunoglobulin Type: IgG

Purification: Affinity Chromatography.

Applications: WB, ICC, IHC-P, IHC-F, ELISA

Concentration: 200µg/mL

UOM: 100µg



Sample: Recombinant C3, Rat

[IMMUNOGEN INFORMATION]

Immunogen: Recombinant C3 (Asp966~Trp1313) expressed in *E.coli*.

Accession No.: RPA861Ra01

Sequence: The target protein is fused with N-terminal His-Tag and its sequence is listed below.

MGHHHHHSGS-DLSDQ VPDTDSETRI LLQGTPVAQM AEDAVIDGERL KHLIVTPSGC
GEQNMIGMTP TVIAVHYLDQ TEQWEKFGLE KRQEALELIK KGYTQQLAFK QPISAYAAFN
NRPPSTWLTA MWSRSFSLAA NLIAIDSQVL CGAVKWLILE KQKPDGVFQE DGPVIHQEMI
GGFRNTKEAD VSLTAFVLIA LQEARDICEG QVNSLPGSIN KAGEYLEASY LNLQRPTYVA
IAGYALALMN KLEEPLYLTKF LNTAKDRNRW EEPGQQLYNV EATSYALLAL LLLKDFDSVP
PVVRWLNDER YYGGGYGSTQ ATFMVFQALA QYRADVPDVK DLNMDVSLHL
PSRSSPTVFR LLW

[ANTIBODY SPECIFICITY]

The antibody is a rabbit polyclonal antibody raised against C3. It has been selected for its ability to recognize C3 in immunohistochemical staining and western blotting.

[APPLICATIONS]

Western blotting: 1:100-400

Immunocytochemistry in formalin fixed cells: 1:100-500

Immunohistochemistry in formalin fixed frozen section: 1:100-500

Immunohistochemistry in paraffin section: 1:50-200

Enzyme-linked Immunosorbent Assay: 1:100-200

Optimal working dilutions must be determined by end user.

[CONTENTS]

Form & Buffer: Supplied as solution form in PBS, pH7.4, containing 0.02% NaN_3 , 50% glycerol.

[QUALITY CONTROL]

Content: The quality control contains recombinant C3 (Asp966~Trp1313) disposed in loading buffer.

Usage: 10uL per well when 3,3'-Diaminobenzidine(DAB) as the substrate.

5uL per well when used in enhanced chemiluminescent (ECL).

Note: The quality control is specifically manufactured as the positive control. Not used for other purposes.

Loading Buffer: 100mM Tris(pH8.8), 2% SDS, 200mM NaCl, 50% glycerol, BPB 0.01%, NaN_3 0.02%.

[STORAGE]

Store at 4°C for frequent use. Stored at -20°C to -80°C in a manual defrost freezer for one year without detectable loss of activity. Avoid repeated freeze-thaw cycles.

Note: *As fluorescence can photobleach when exposed to light, so the antibody must be protected from light.*