

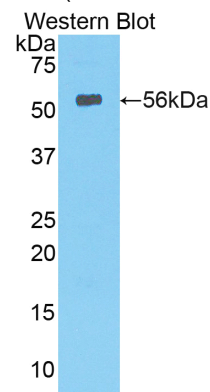
**pA90769Po01**  
**Polyclonal Antibody to Lipase,Hepatic(LIPC)**  
**Organism: Sus scrofa; Porcine (Pig)**  
***Instruction manual***

FOR IN VITRO USE AND RESEARCH USE ONLY  
 NOT FOR USE IN CLINICAL DIAGNOSTIC PROCEDURES

**[ PRODUCT INFORMATION ]**

**Immunogen:** LIPC, Porcine  
**Clonality:** Polyclonal  
**Host:** Rabbit  
**Immunoglobulin Type:** IgG  
**Purification:** Affinity Chromatography.  
**Applications:** WB, ICC, IHC-P, IHC-F, ELISA  
**Concentration:** 200µg/mL  
**UOM:** 100µg




7th Edition (Revised in May, 2013)



*Sample: Recombinant LIPC, Porcine*

**[ IMMUNOGEN INFORMATION ]**

**Immunogen:** Recombinant LIPC (Gln103~Tyr356) expressed in *E.coli*.  
**USCN Accession No.:** rP90769Po01  
**Sequence:** The target protein is fused with two N-terminal Tags, His-tag and GST-tag and its sequence is listed below.  
 MRNKKFELGL EFPNLPYYID GDVKLTQSMA IIRYIADKHN MLGGCPKERA EISMLEGAVL  
 DIRYGVSRIA YSKDFETLKV DFLSKLPEML KMFEDRLCHK TYLNGDHVTH PDFMLYDALD  
 VVLYMDPMCL DAFPKLVCFK KRIEAIQID KYLKSSKYIA WPLQGQWQATF GGGDHPKSD  
 GSTSGSGHHH HHHSAGLVPR GSTAIGMKET AAKFERQHM DSPDLGTLEV  
 LFQGPLGS-QMVAALKS QLAQPANVGL ADWVTLAHNH YTMAVRNTRL VGGEIKALLR  
 WLEESVHFSP SKVHLIGYSL GAHVAGFAGS YMGRKHKIGR ITGLDAAGPL FERASPRDRL  
 SPDDANFVDA IHTFTREHMG LSVGIKRPIA HYDFYPNGGS FQPGCHLLEL YKHIATHGLN  
 AITRTIKCAH ERSVHLFIDS VLHPGMQSTA YLCKDMDSFS QGLCLSCCKG RCTTLGYTH  
 QEQQSKKSKS LFLMTRAQPP FKVYHY

**Unique product Superb quality Client favorite Nicest service**  ISO9001:2008 ;  ISO13485:2003 ;  CE

## [ ANTIBODY SPECIFICITY ]

The antibody is a rabbit polyclonal antibody raised against LIPC. It has been selected for its ability to recognize LIPC in immunohistochemical staining and western blotting.

## [ APPLICATIONS ]

Western blotting: 1:100-400

Immunocytochemistry in formalin fixed cells: 1:100-500

Immunohistochemistry in formalin fixed frozen section: 1:100-500

Immunohistochemistry in paraffin section: 1:50-200

Enzyme-linked Immunosorbent Assay: 1:100-200

Optimal working dilutions must be determined by end user.

## [ CONTENTS ]

**Form & Buffer:** Supplied as solution form in PBS, pH7.4, containing 0.02% NaN<sub>3</sub>, 50% glycerol.

## [ QUALITY CONTROL ]

**Content:** The quality control contains recombinant LIPC (Gln103~Tyr356) disposed in loading buffer.

**Usage:** 10uL per well when 3,3'-Diaminobenzidine(DAB) as the substrate.  
5uL per well when used in enhanced chemiluminescent (ECL).

**Note:** The quality control is specifically manufactured as the positive control. Not used for other purposes.

**Loading Buffer:** 100mM Tris(pH8.8), 2% SDS, 200mM NaCl, 50% glycerol, BPB 0.01%, NaN<sub>3</sub> 0.02%.

## [ STORAGE ]

Store at 4°C for frequent use. Stored at -20°C to -80°C in a manual defrost freezer for one year without detectable loss of activity. Avoid repeated freeze-thaw cycles.

*Unique product Superb quality Client favorite Nicest service*  ISO9001:2008 ;  ISO13485:2003 ;  CE