

PAA746Hu03

Polyclonal Antibody to Fibroblast Growth Factor 23 (FGF23)

Organism Species: Homo sapiens (Human)

Instruction manual

FOR IN VITRO USE AND RESEARCH USE ONLY

NOT FOR USE IN CLINICAL DIAGNOSTIC PROCEDURES

9th Edition (Revised in Jul, 2013)

[PRODUCT INFORMATION]

Immunogen: FGF23, Human

Clonality: Polyclonal

Host: Rabbit

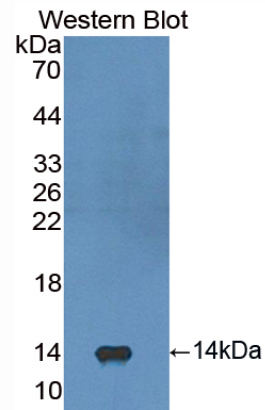
Immunoglobulin Type: IgG

Purification: Affinity Chromatography.

Applications: WB, ICC, IHC-P, IHC-F, ELISA

Concentration: 200µg/mL

UOM: 100µg



Sample: Recombinant FGF23, Human

[IMMUNOGEN INFORMATION]

Immunogen: Recombinant FGF23 (Asp79~Arg160) expressed in *E.coli*.

Accession No.: RPA746Hu03

Sequence: The target protein is fused with N-terminal His-Tag and its sequence is listed below.

MGHHHHHSG SEF- DA GFVVITGVMS RRYLCMDFRG NIFGSHYFDP ENCRFQHQTL
ENGYDVYHSP QYHFLVSLGR AKRAFLPGMN PPPYSQFLSR

[ANTIBODY SPECIFICITY]

The antibody is a rabbit polyclonal antibody raised against FGF23. It has been selected for its ability to recognize FGF23 in immunohistochemical staining and western blotting.

[APPLICATIONS]

Western blotting: 1:50-400

Immunocytochemistry in formalin fixed cells: 1:50-500

Immunohistochemistry in formalin fixed frozen section: 1:50-500

Immunohistochemistry in paraffin section: 1:10-100

Enzyme-linked Immunosorbent Assay: 1:100-200

Optimal working dilutions must be determined by end user.

[CONTENTS]

Form & Buffer: Supplied as solution form in PBS, pH7.4, containing 0.02% NaN₃, 50% glycerol.

[STORAGE]

Store at 4°C for frequent use. Stored at -20°C to -80°C in a manual defrost freezer for one year without detectable loss of activity. Avoid repeated freeze-thaw cycles.