

PAA716Ra01

Polyclonal Antibody to Glucose 6 Phosphate Dehydrogenase (G6PD)

Organism Species: *Rattus norvegicus* (Rat)

Instruction manual

FOR IN VITRO USE AND RESEARCH USE ONLY
NOT FOR USE IN CLINICAL DIAGNOSTIC PROCEDURES

[PRODUCT INFORMATION]

Immunogen: G6PD, Rat

Clonality: Polyclonal

Host: Rabbit

Immunoglobulin Type: IgG

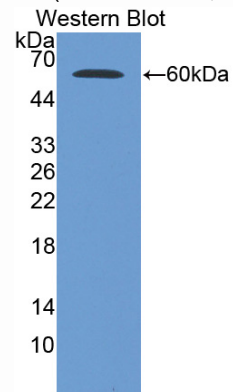
Purification: Affinity Chromatography.

Applications: WB, ICC, IHC-P, IHC-F, ELISA

Concentration: 200µg/mL

UOM: 100µg

9th Edition (Revised in Jul, 2013)



Sample: Recombinant G6PD, Rat

[IMMUNOGEN INFORMATION]

Immunogen: Recombinant G6PD (Met1~Leu515) expressed in *E.coli*.

Accession No.: RPA716Ra01

Sequence: The target protein is fused with N-terminal His-Tag and its sequence is listed below.

MGHHHHHHSGSEF-MAEQVALSRT QVCGILREEL YQGDAFHQAD THIFIIMGAS
GDLAKKKIYP TIWWLFRDGL LPEDTFIVGY ARSRLTVDDI RKQSEPFKVK TPEERPKLEE
FFARNSYVAG QYDDPASYKH LNSHMNALHQ GMQANRLFYL ALPPTVYEAV TKNIQEICMS
QTGWNRIIVE KPFGRLQSS NQLSNHISSL FREDQIYRID HYLKGEMVQN LMVLRFANRI
FGPIWNRDNI ACVILTFKEP FGTEGRGGYF DEFGIIRDVM QNHLLQMLCL VAMEKPASTD
SDDVRDEKVK VLKCISEVET DNVVLGQYVG NPSGEGEATN GYLDDPTVPH GSTTATFAAA
VLYVENERWD GVPFILRCGK ALNERKAEVR LQFRDVAGDI FHQQCKRNL VIRVQPNEAV

YTKMMTKKPG MFFNPEESEL DLTYGNRYKN VKLPDAYERL ILDVFCGSQM HFVRSDELRE
AWRIFTPLH KIDREKPQPI PYVYGSRGPT EADELMKRVG FQYEGTYKWV NPHKL

[ANTIBODY SPECIFICITY]

The antibody is a rabbit polyclonal antibody raised against G6PD. It has been selected for its ability to recognize G6PD in immunohistochemical staining and western blotting.

[APPLICATIONS]

Western blotting: 1:100-400

Immunocytochemistry in formalin fixed cells: 1:100-500

Immunohistochemistry in formalin fixed frozen section: 1:100-500

Immunohistochemistry in paraffin section: 1:50-200

Enzyme-linked Immunosorbent Assay: 1:100-200

Optimal working dilutions must be determined by end user.

[CONTENTS]

Form & Buffer: Supplied as solution form in PBS, pH7.4, containing 0.02% NaN_3 , 50% glycerol.

[QUALITY CONTROL]

Content: The quality control contains recombinant G6PD (Met1~Leu515) disposed in loading buffer.

Usage: 10uL per well when 3,3'-Diaminobenzidine(DAB) as the substrate.
5uL per well when used in enhanced chemiluminescent (ECL).

Note: The quality control is specifically manufactured as the positive control. Not used for other purposes.

Loading Buffer: 100mM Tris(pH8.8), 2% SDS, 200mM NaCl, 50% glycerol, BPB 0.01%, NaN_3 0.02%.

[STORAGE]

Store at 4°C for frequent use. Stored at -20°C to -80°C in a manual defrost freezer for one year without detectable loss of activity. Avoid repeated freeze-thaw cycles.