

**PAA635Hu01**

**Polyclonal Antibody to Complement Factor H (CFH)**

**Organism Species: Homo sapiens (Human)**

***Instruction manual***

FOR IN VITRO USE AND RESEARCH USE ONLY

NOT FOR USE IN CLINICAL DIAGNOSTIC PROCEDURES

---

9th Edition (Revised in Jul, 2013)

## **[ PRODUCT INFORMATION ]**

**Immunogen:** CFH, Human

**Clonality:** Polyclonal

**Host:** Rabbit

**Immunoglobulin Type:** IgG

**Purification:** Affinity Chromatography.

**Applications:** WB, ICC, IHC-P, IHC-F, ELISA

**Concentration:** 200µg/mL

**UOM:** 100µg

## **[ IMMUNOGEN INFORMATION ]**

**Immunogen:** Recombinant CFH (Ser860~Arg1231) expressed in *E.coli*.

**Accession No.:** RPA635Hu01

**Sequence:** The target protein is fused with N-terminal His-Tag and its sequence is listed below.

MGHHHHHHS GSEF-S IPLCVEKIPC SQPPQIEHGT INSSRSSQES YAHGTKLSYT  
CEGGFRISEE NETTCYMGKW SSPPQCEGLP CKSPPEISHG VVAHMSDSYQ  
YGEEVTYKCF EFGIDGPAI AKCLGEKWSH PPSCIKTDC LSLPSFENAIP MGEKKDVYKA  
GEQVITYTCAT YYKMDGASNV TCINSRWTGR PTCRDTSCVN PPTVQNAIYV SRQMSKYPSG  
ERVRYQCRSP YEMFGDEEVM CLNGNWTEPP QCKDSTGKCG PPPPIDNGDI TSFPLSVYAP  
ASSVEYQCQNLYQLEGNKRI TCRNGQWSEP PKCLHPCVIS REIMENYNIA LRWTAKQKLY  
SRTGESVEFV CKRGYRLSSR SHTLRITTCWD GKLEYPTCAK R

## **[ ANTIBODY SPECIFICITY ]**

The antibody is a rabbit polyclonal antibody raised against CFH. It has been selected for its ability to recognize CFH in immunohistochemical staining and western blotting.

## **[ APPLICATIONS ]**

Western blotting: 1:100-400

Immunocytochemistry in formalin fixed cells: 1:100-500

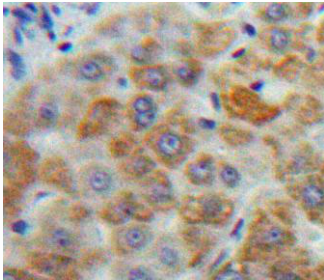
Immunohistochemistry in formalin fixed frozen section: 1:100-500

Immunohistochemistry in paraffin section: 1:50-200

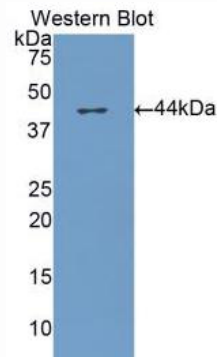
Enzyme-linked Immunosorbent Assay: 1:100-200

Optimal working dilutions must be determined by end user.

## [ **IMAGES** ]



Used in DAB staining on formalin fixed  
paraffin- embedded Liver tissue



Used in Western Blot ,Sample:  
Recombinant CFH,Human

## [ **CONTENTS** ]

**Form & Buffer:** Supplied as solution form in PBS, pH7.4, containing 0.02%  $\text{NaN}_3$ , 50% glycerol.

## [ **QUALITY CONTROL** ]

**Content:** The quality control contains recombinant CFH (Ser860~Arg1231) disposed in loading buffer.

**Usage:** 10uL per well when 3,3'-Diaminobenzidine(DAB) as the substrate.  
5uL per well when used in enhanced chemiluminescent (ECL).

**Note:** The quality control is specifically manufactured as the positive control. Not used for other purposes.

**Loading Buffer:** 100mM Tris(pH8.8), 2% SDS, 200mM NaCl, 50% glycerol, BPB 0.01%,  $\text{NaN}_3$  0.02%.

## [ **STORAGE** ]

Store at 4°C for frequent use. Stored at -20°C to -80°C in a manual defrost freezer for one year without detectable loss of activity. Avoid repeated freeze-thaw cycles.