

PAA585Hu01

Polyclonal Antibody to Cyclin D1 (CCND1)

Organism Species: Homo sapiens (Human)

Instruction manual

FOR IN VITRO USE AND RESEARCH USE ONLY
NOT FOR USE IN CLINICAL DIAGNOSTIC PROCEDURES

9th Edition (Revised in Jul, 2013)

[**PRODUCT INFORMATION**]

Immunogen: CCND1, Human

Clonality: Polyclonal

Host: Rabbit

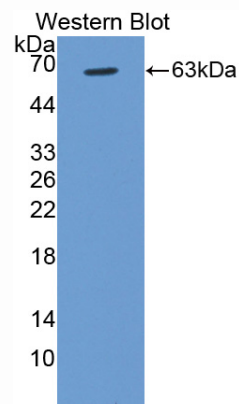
Immunoglobulin Type: IgG

Purification: Affinity Chromatography.

Applications: WB, ICC, IHC-P, IHC-F, ELISA

Concentration: 200µg/mL

UOM: 50µg



Sample: Recombinant CCND1, Human

[**IMMUNOGEN INFORMATION**]

Immunogen: Recombinant CCND1 (Met1~Ile295) expressed in *E.coli*.

Accession No.: RPA585Hu01

Sequence: The target protein is fused with two N-terminal Tags, His-tag and GST-tag and its sequence is listed below.

MSPILGYWKI KGLVQPTRL L LEYLEEKYEE HLYERDEGDK WRNKKFELGL EFPNLPYYID
GDVKLTQSMA IIRYIADKHN MLGGCPKERA EISMLEGAVL DIRYGVSR IA YSKDFETLKV
DFLSKLP EML KMFEDRLCHK TYLNGDHVTH PDFMLYDALD VVLYMDPMCL DAFPKLVCFK
KRIEAIQID KYLKSSKYIA WPLQG WQATF GGGDHPKSD GSTSGSGHHH HHSAGLVPR
GSTAIGMKET AAKFERQHM DSPDLGTLEV LFQGPLGSEF-MEHQLLCCEV ETIRRAYPDA
NLLNDRV LRA MLKAEETCAP SVSYFKCVQK EVLPSMRKIV ATWMLEVCEE QKCEEEVFPL
AMNYLDRFLS LEPVKK SRLQ LLGATCMFVA SKMKETIPLT AEKLCIYTDN SIRPEELLQM

ELLLVNKLKW NLAAMTPHDF IEHFLSKMPE AEENKQIIRK HAQTFVALCA TDVKFISNPP
SMVAAGSVVA AVQGLNLRSP NNFLSYRRLT RFLSRVIKCD PDCLRACQEQ IEALLESSLR
QAQQNMDPKA AEEEEEEEEEE VDLACTPTDV RDVDI

[ANTIBODY SPECIFICITY]

The antibody is a rabbit polyclonal antibody raised against CCND1. It has been selected for its ability to recognize CCND1 in immunohistochemical staining and western blotting.

[APPLICATIONS]

Western blotting: 1:100-400

Immunocytochemistry in formalin fixed cells: 1:100-500

Immunohistochemistry in formalin fixed frozen section: 1:100-500

Immunohistochemistry in paraffin section: 1:50-200

Enzyme-linked Immunosorbent Assay: 1:100-200

Optimal working dilutions must be determined by end user.

[CONTENTS]

Form & Buffer: Supplied as solution form in PBS, pH7.4, containing 0.02% NaN₃, 50% glycerol.

[QUALITY CONTROL]

Content: The quality control contains recombinant CCND1 (Met1~Ile295) disposed in loading buffer.

Usage: 10uL per well when 3,3'-Diaminobenzidine(DAB) as the substrate.
5uL per well when used in enhanced chemiluminescent (ECL).

Note: The quality control is specifically manufactured as the positive control. Not used for other purposes.

Loading Buffer: 100mM Tris(pH8.8), 2% SDS, 200mM NaCl, 50% glycerol, BPB 0.01%, NaN₃ 0.02%.

[STORAGE]

Store at 4°C for frequent use. Stored at -20°C to -80°C in a manual defrost freezer for one year without detectable loss of activity. Avoid repeated freeze-thaw cycles.