

PAA556Hu01

Polyclonal Antibody to Keratin 7 (KRT7)

Organism Species: Homo sapiens (Human)

Instruction manual

FOR IN VITRO USE AND RESEARCH USE ONLY
NOT FOR USE IN CLINICAL DIAGNOSTIC PROCEDURES

9th Edition (Revised in Jul, 2013)

[PRODUCT INFORMATION]

Immunogen: KRT7, Human

Clonality: Polyclonal

Host: Rabbit

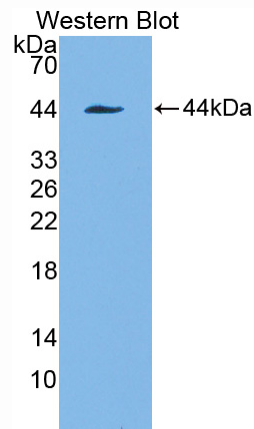
Immunoglobulin Type: IgG

Purification: Affinity Chromatography.

Applications: WB, ICC, IHC-P, IHC-F, ELISA

Concentration: 200µg/mL

UOM: 100µg



Sample: Recombinant KRT7, Human

[IMMUNOGEN INFORMATION]

Immunogen: Recombinant KRT7 (Glu91~Lys394) expressed in *E.coli*.

Accession No.: RPA556Hu01

Sequence: The target protein is fused with two N-terminal Tags, His-tag and S-tag and its sequence is listed below.

MHHHHHHSSG LVPRGSGMKE TAAKFERQH MDSPDLGTDD DDKAMADIGS EF-
ESEQIKTLNN KFAFIDKVR FLEQQNKLLK TKWTLLEQEQK SAKSSRLPDI FEAQIAGLRG
QLEALQVDGG RLEAELRSMQ DVVEDFKNKY EDEINHRTAA ENFVVLKGD VDAAYMSKVE
LEAKVDALND EINFRLTLNE TELTELQSQI SDTSVVLSD NSRSLDLGI IAEVKAQYEE
MAKCSRAEAE AWYQTKFETL QAQAGKHGDD LRNTRNEISE MNRAIQRLQA EIDNIKNQRA
KLEAAIAEAE ERGELALKDA RAKQEELEAA LQRGKQDMAR QLREYQELMS VKLALDIEIA
TYRK

[ANTIBODY SPECIFICITY]

The antibody is a rabbit polyclonal antibody raised against KRT7. It has been selected for its ability to recognize KRT7 in immunohistochemical staining and western blotting.

[APPLICATIONS]

Western blotting: 1:100-400

Immunocytochemistry in formalin fixed cells: 1:100-500

Immunohistochemistry in formalin fixed frozen section: 1:100-500

Immunohistochemistry in paraffin section: 1:50-200

Enzyme-linked Immunosorbent Assay: 1:100-200

Optimal working dilutions must be determined by end user.

[CONTENTS]

Form & Buffer: Supplied as solution form in PBS, pH7.4, containing 0.02% NaN_3 , 50% glycerol.

[QUALITY CONTROL]

Content: The quality control contains recombinant KRT7 (Glu91~Lys394) disposed in loading buffer.

Usage: 10uL per well when 3,3'-Diaminobenzidine(DAB) as the substrate.

5uL per well when used in enhanced chemiluminescent (ECL).

Note: The quality control is specifically manufactured as the positive control. Not used for other purposes.

Loading Buffer: 100mM Tris(pH8.8), 2% SDS, 200mM NaCl, 50% glycerol, BPB 0.01%, NaN_3 0.02%.

[STORAGE]

Store at 4°C for frequent use. Stored at -20°C to -80°C in a manual defrost freezer for one year without detectable loss of activity. Avoid repeated freeze-thaw cycles.