

PAA537Mu01

Polyclonal Antibody to Enolase, Neuron Specific (NSE)**Organism Species: Mus musculus (Mouse)****Instruction manual**

FOR IN VITRO USE AND RESEARCH USE ONLY

NOT FOR USE IN CLINICAL DIAGNOSTIC PROCEDURES

9th Edition (Revised in Jul, 2013)

[PRODUCT INFORMATION]**Immunogen:** NSE, Mouse**Clonality:** Polyclonal**Host:** Rabbit**Immunoglobulin Type:** IgG**Purification:** Affinity Chromatography.**Applications:** WB, ICC, IHC-P, IHC-F, ELISA**Concentration:** 200µg/mL**UOM:** 100µg**[IMMUNOGEN INFORMATION]****Immunogen:** Recombinant NSE (Met1~Leu434) expressed in *E.coli*.**Accession No.:** RPA537Mu01**Sequence:** The target protein is fused with N-terminal His-Tag and its sequence is listed below.

MGHHHHHHSSEF- MSIEKIWARE ILDSRGNPTV EVDLYTAKGL FRAAVPSGAS
TGIYEALRLR DGDQRYLGLK GVLKAVDHIN SRIAPALISS GISVVEQEKL DNLMLELDGT
ENKSKFGANA ILGVSLAVCK AGAAERDLPL YRHIAQLAGN SDLILPVPAF NVINGGSHAG
NKLAMQEFMI LPVGAESFRD AMRLGAEVYH TLKGVKDKY GKDATNVGDE GGFAPNILEN
SEALELVKEA IDKAGYTEKM VIGMDVAASE FYRDGKYDLD FKSPADPSRY ITGDQLGALY
QDFVRNYPVV SIEDPFDQDD WAAWSKFTAN VGIQIVGDDL TVTNPKRIER AVEEKACNCL
LLKVNQIGSV TEAIQACKLA QENGWGVMS HRSGETEDTF IADLVVGLCT GQIKTGAPCR
SERLAKYNQL MRIEEELGDE ARFAGHNFRN PSVL

[ANTIBODY SPECIFICITY]

The antibody is a rabbit polyclonal antibody raised against NSE. It has been selected for its ability to recognize NSE in immunohistochemical staining and western blotting.

[APPLICATIONS]

Western blotting: 1:50-400

Immunocytochemistry in formalin fixed cells: 1:50-500

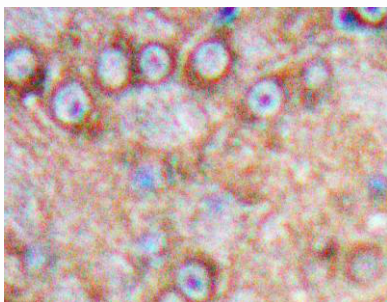
Immunohistochemistry in formalin fixed frozen section: 1:50-500

Immunohistochemistry in paraffin section: 1:10-100

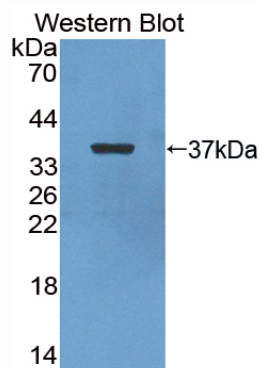
Enzyme-linked Immunosorbent Assay: 1:100-200

Optimal working dilutions must be determined by end user.

[IMAGES]



Used in DAB staining on formalin fixed
paraffin-embedded Brain tissue



Used in Western Blot, Sample:
Recombinant NSE, Mouse

[CONTENTS]

Form & Buffer: Supplied as solution form in PBS, pH7.4, containing 0.02% NaN_3 , 50% glycerol.

[QUALITY CONTROL]

Content: The quality control contains recombinant NSE (Met1~Leu434) disposed in loading buffer.

Usage: 10uL per well when 3,3'-Diaminobenzidine(DAB) as the substrate.
5uL per well when used in enhanced chemiluminescent (ECL).

Note: The quality control is specifically manufactured as the positive control. Not used for other purposes.

Loading Buffer: 100mM Tris(pH8.8), 2% SDS, 200mM NaCl, 50% glycerol, BPB 0.01%, NaN_3 0.02%.

[STORAGE]

Store at 4°C for frequent use. Stored at -20°C to -80°C in a manual defrost freezer for one year without detectable loss of activity. Avoid repeated freeze-thaw cycles.