

PAA537Hu02

**Polyclonal Antibody to Enolase, Neuron Specific (NSE)****Organism Species: Homo sapiens (Human)*****Instruction manual***

FOR IN VITRO USE AND RESEARCH USE ONLY

NOT FOR USE IN CLINICAL DIAGNOSTIC PROCEDURES

9th Edition (Revised in Jul, 2013)

**[ PRODUCT INFORMATION ]****Immunogen:** NSE, Human**Clonality:** Polyclonal**Host:** Rabbit**Immunoglobulin Type:** IgG**Purification:** Affinity Chromatography.**Applications:** WB, ICC, IHC-P, IHC-F, ELISA**Concentration:** 200µg/mL**UOM:** 100µg**[ IMMUNOGEN INFORMATION ]****Immunogen:** Recombinant NSE (Ser2~Leu434) expressed in *E.coli*.**Accession No.:** RPA537Hu02**Sequence:** The target protein is fused with N-terminal His-Tag and its sequence is listed below.

MGHHHHHSGSEF-SIEKIWARE ILDSRGNPTV EVDLYTAKGL FRAAVPSGAS TGIYEALELR  
DGDKQRYLGK GVLKAVDHIN STIAPALISS GLSVVEQEKL DNLMLELDGT ENKSKFGANA  
ILGVSLAVCK AGAAERELPL YRHIAQLAGN SDLILPVPAF NVINGGSHAG NKLAMQEFMI  
LPVGAESFRD AMRLGAEVYH TLKGVIKDKY GKDATNVGDE GGFAPNILEN SEALELVKEA  
IDKAGYTEKI VIGMDVAASE FYRDGKYDLD FKSPDPSRY ITGDQLGALY QDFVRDYPVV  
SIEDPFDQDD WAAWSKFTAN VGIQIVGDDL TVTNPKRIER AVEEKACNCL LLKVNQIGSV  
TEAIQACKLA QENGWGMVMS HRSGETEDTF IADLVVGLCT GQIKTGAPCR SERLAKYNQL  
MRIEEELGDE ARFAGHNFRN PSVL

**[ ANTIBODY SPECIFICITY ]**

The antibody is a rabbit polyclonal antibody raised against NSE. It has been selected for its ability to recognize NSE in immunohistochemical staining and western blotting.

**[ APPLICATIONS ]**

Western blotting: 1:100-400

Immunocytochemistry in formalin fixed cells: 1:100-500

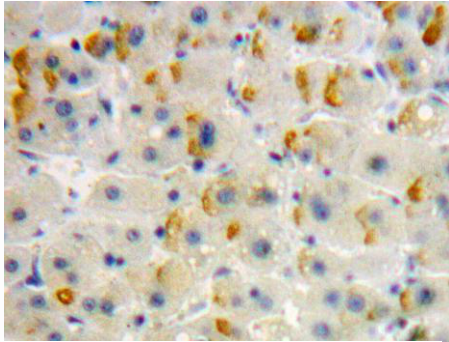
Immunohistochemistry in formalin fixed frozen section: 1:100-500

Immunohistochemistry in paraffin section: 1:50-200

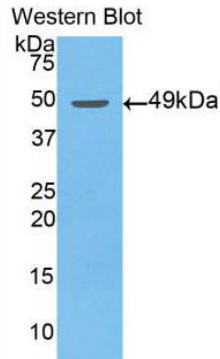
Enzyme-linked Immunosorbent Assay: 1:100-200

Optimal working dilutions must be determined by end user.

## [ IMAGES ]



Used in DAB staining on formalin fixed  
paraffin-embedded Liver tissue



Used in Western Blot, Sample:  
Recombinant NSE, Human

## [ CONTENTS ]

**Form & Buffer:** Supplied as solution form in PBS, pH7.4, containing 0.02%  $\text{NaN}_3$ , 50% glycerol.

## [ QUALITY CONTROL ]

**Content:** The quality control contains recombinant NSE (Ser2~Leu434) disposed in loading buffer.

**Usage:** 10uL per well when 3,3'-Diaminobenzidine(DAB) as the substrate.  
5uL per well when used in enhanced chemiluminescent (ECL).

**Note:** The quality control is specifically manufactured as the positive control. Not used for other purposes.

**Loading Buffer:** 100mM Tris(pH8.8), 2% SDS, 200mM NaCl, 50% glycerol, BPB 0.01%,  $\text{NaN}_3$  0.02%.

## [ STORAGE ]

Store at 4°C for frequent use. Stored at -20°C to -80°C in a manual defrost freezer for one year without detectable loss of activity. Avoid repeated freeze-thaw cycles.