

PAA516Hu01

Polyclonal Antibody to Keratin 16 (KRT16)

Organism: Homo sapiens (Human)

Instruction manual

FOR IN VITRO USE AND RESEARCH USE ONLY
NOT FOR USE IN CLINICAL DIAGNOSTIC PROCEDURES

9th Edition (Revised in Jul, 2013)

[**PRODUCT INFORMATION**]

Immunogen: KRT16, Human

Clonality: Polyclonal

Host: Rabbit

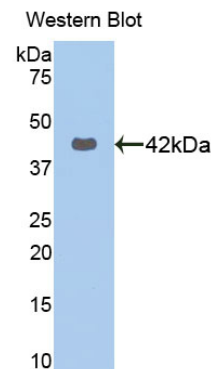
Immunoglobulin Type: IgG

Purification: Affinity Chromatography.

Applications: WB, ICC, IHC-P, IHC-F

Concentration: 200µg/mL

UOM: 50µg



Sample: Recombinant KRT16, Human

[**IMMUNOGEN INFORMATION**]

Immunogen: Recombinant KRT16 (Glu117~Arg419) expressed in *E.coli*.

USCN Accession No.: RPA516Hu01

Sequence: The target protein is fused with two N-terminal Tags, His-tag and S-tag and its sequence is listed below.

MHHHHHHSSG LVPRGSGMKE TAAAKFERQH MDSPDLGTDD DDKAMADIGS EF- EKVT
MQNLNDRLAS YLDKVRAL EE ANADLEV KIR DWYQRQRPSE IKDYSPYFKT IEDLRNKIIA
ATIENAQPIL QIDNARLAAD DFRTKYEHEL ALRQTVEADV NGLRRVLEDEL TLARTDLEMQ
IEGLKEELAY LRKNHEE EML ALRGQTGGDV NVEMDAAPGV DLSRILNEMR DQYEQMAEKN
RRDAETWFLS KTEELNKEVA SNS ELVQSSR SEVTELRRLV QGLEIELQSQ LSMKASLENS
LEETKGRYCM QLSIQQLIG SVEEQLAQLR CEMEQQSQEY QILLDVKTRL EQEIATYRR

[ANTIBODY SPECIFICITY]

The antibody is a rabbit polyclonal antibody raised against KRT16. It has been selected for its ability to recognize KRT16 in immunohistochemical staining and western blotting.

[APPLICATIONS]

Western blotting: 1:100-400

Immunocytochemistry in formalin fixed cells: 1:100-500

Immunohistochemistry in formalin fixed frozen section: 1:100-500

Immunohistochemistry in paraffin section: 1:50-200

Optimal working dilutions must be determined by end user.

[CONTENTS]

Form & Buffer: Supplied as solution form in PBS, pH7.4, containing 0.02% NaN₃, 50% glycerol.

[QUALITY CONTROL]

Content: The quality control contains recombinant KRT16 (Glu117~Arg419) disposed in loading buffer.

Usage: 10uL per well when 3,3'-Diaminobenzidine(DAB) as the substrate.
5uL per well when used in enhanced chemiluminescent (ECL).

Note: The quality control is specifically manufactured as the positive control. Not used for other purposes.

Loading Buffer: 100mM Tris(pH8.8), 2% SDS, 200mM NaCl, 50% glycerol, BPB 0.01%, NaN₃ 0.02%.

[STORAGE]

Store at 4°C for frequent use. Stored at -20°C to -80°C in a manual defrost freezer for one year without detectable loss of activity. Avoid repeated freeze-thaw cycles.