

**PAA489Hu01**

**Polyclonal Antibody to Keratin 4 (KRT4)**

**Organism Species: Homo sapiens (Human)**

***Instruction manual***

FOR IN VITRO USE AND RESEARCH USE ONLY  
NOT FOR USE IN CLINICAL DIAGNOSTIC PROCEDURES

9th Edition (Revised in Jul, 2013)

## **[ PRODUCT INFORMATION ]**

**Immunogen:** KRT4, Human

**Clonality:** Polyclonal

**Host:** Rabbit

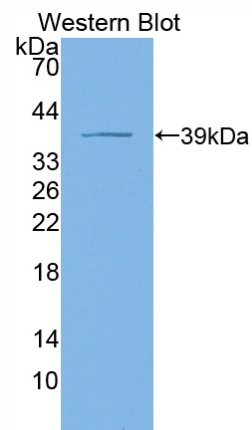
**Immunoglobulin Type:** IgG

**Purification:** Affinity Chromatography.

**Applications:** WB, ICC, IHC-P, IHC-F, ELISA

**Concentration:** 200µg/mL

**UOM:** 100µg



*Sample: Recombinant KRT4, Human*

## **[ IMMUNOGEN INFORMATION ]**

**Immunogen:** Recombinant KRT4 (Arg152~Leu457) expressed in *E.coli*.

**Accession No.:** RPA489Hu01

**Sequence:** The target protein is fused with two N-terminal Tags, His-tag and T7-tag and its sequence is listed below.

MGSSHHHHHH SSGLVPRGSH MASMTGGQQM GRGSEF- REQIKLLNN KFASFIDKVV  
FLEQQNKVLE TKWLLQQQT TTTSSKNLEP LFETYLSVLR KQLDTLGN DK GRLQSELKTM  
QDSVEDFKTK YEEEINKRTA AENDFVVLKK DVDAAYLNKV ELEAKVDSL N DEINFLKVLV  
DAELSQMQTH VSDTSVVL SM DNNRNLDLDS IIAEVRAQYE EIAQRSKAEA EALYQTKVQQ  
LQISVDQHGD NLKNTKSEIA ELNRMIQRLR AEIENIKKQC QTLQVSVADA EQRGENALKD  
AHSKRVELEA ALQQAKEELA RMLREYQELM SVKLALDIEI ATYRKL

## **[ ANTIBODY SPECIFICITY ]**

The antibody is a rabbit polyclonal antibody raised against KRT4. It has been selected for its ability to recognize KRT4 in immunohistochemical staining and western blotting.

## **[ APPLICATIONS ]**

Western blotting: 1:100-400

Immunocytochemistry in formalin fixed cells: 1:100-500

Immunohistochemistry in formalin fixed frozen section: 1:100-500

Immunohistochemistry in paraffin section: 1:50-200

Enzyme-linked Immunosorbent Assay: 1:100-200

Optimal working dilutions must be determined by end user.

## **[ CONTENTS ]**

**Form & Buffer:** Supplied as solution form in PBS, pH7.4, containing 0.02%  $\text{NaN}_3$ , 50% glycerol.

## **[ QUALITY CONTROL ]**

**Content:** The quality control contains recombinant KRT4 (Arg152~Leu457) disposed in loading buffer.

**Usage:** 10uL per well when 3,3'-Diaminobenzidine(DAB) as the substrate.

5uL per well when used in enhanced chemiluminescent (ECL).

**Note:** The quality control is specifically manufactured as the positive control. Not used for other purposes.

**Loading Buffer:** 100mM Tris(pH8.8), 2% SDS, 200mM NaCl, 50% glycerol, BPB 0.01%,  $\text{NaN}_3$  0.02%.

## **[ STORAGE ]**

Store at 4°C for frequent use. Stored at -20°C to -80°C in a manual defrost freezer for one year without detectable loss of activity. Avoid repeated freeze-thaw cycles.