

PAA437Mu01**Polyclonal Antibody to Estrogen Receptor Beta (ERb)****Organism Species: Mus musculus (Mouse)****Instruction manual**

FOR IN VITRO USE AND RESEARCH USE ONLY

NOT FOR USE IN CLINICAL DIAGNOSTIC PROCEDURES

9th Edition (Revised in Jul, 2013)

[PRODUCT INFORMATION]**Immunogen:** ERb, Mouse**Clonality:** Polyclonal**Host:** Rabbit**Immunoglobulin Type:** IgG**Purification:** Affinity Chromatography.**Applications:** WB, ICC, IHC-P, IHC-F, ELISA**Concentration:** 200µg/mL**UOM:** 100µg**[IMMUNOGEN INFORMATION]****Immunogen:** Recombinant ERb (Met1~Gln530) expressed in *E.coli*.**USCN Accession No.:** RPA437Mu01**Sequence:** The target protein is fused with N-terminal His-Tag and its sequence is listed below.

MGHHHHHHSGSEF-MEIKNSPSSL TSPASYNCSQ SILPLEHGPI YIPSSYVESR
HEYSAMTFYS PAVMNVSVPS STGNLEGGPV RQTASPNVLW PTSGHLSPLA THCQSSLLYA
EPQKSPWCEA RSLEHTLPVN RETLKRKLLGG SGCASPVTSP SAKRDAHFC A
VCSDYASGYH YGVWSCEGCK AFFKRSIQGH NDYICPATNQ CTIDKNRRKS CQACRLRKY
EVGMVKCGSR RERCGYRIVR RQRSASEQVH CLNKAKRTSG HTPRVKELL NSLSPEQLVL
TLLEAEPPNV LVS RPSMPFT EASMMMSLTK LADKELVHMI GWAKKIPGFV ELSLLDQVRL
LESCWMEVLM VGLMWRSIDH PGKLIFAPDL VLDRDEGKCV EGILEIFDML LATTARFREL
KLQHKEYLCV KAMILLNSSM YPLATASQEA ESSRKLTHLL NAVTDALVWV ISKSGISSQQ
QSVRLANLLM LLSHVRHISN KGMEHLLSMK CKNVVPVYDL LLEMLNAHTL RGYKSSISGS
ECCSTEDSKS KEGSQNLQSQ

[ANTIBODY SPECIFICITY]

The antibody is a rabbit polyclonal antibody raised against ERb. It has been selected for its ability to recognize ERb in immunohistochemical staining and western blotting.

[APPLICATIONS]

Western blotting: 1:100-400

Immunocytochemistry in formalin fixed cells: 1:100-500

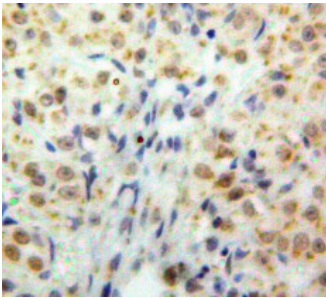
Immunohistochemistry in formalin fixed frozen section: 1:100-500

Immunohistochemistry in paraffin section: 1:50-200

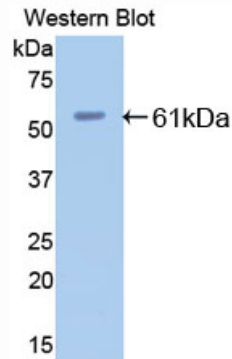
Enzyme-linked Immunosorbent Assay: 1:100-200

Optimal working dilutions must be determined by end user.

[IMAGES]



Used in DAB staining on formalin fixed
paraffin-embedded Ovary tissue



Used in Western Blot, Sample:
Recombinant ERb, Mouse

[CONTENTS]

Form & Buffer: Supplied as solution form in PBS, pH7.4, containing 0.02% NaN₃, 50% glycerol.

[QUALITY CONTROL]

Content: The quality control contains recombinant ERb (Met1~Gln530) disposed in loading buffer.

Usage: 10uL per well when 3,3'-Diaminobenzidine(DAB) as the substrate.
5uL per well when used in enhanced chemiluminescent (ECL).

Note: The quality control is specifically manufactured as the positive control. Not used for other purposes.

Loading Buffer: 100mM Tris(pH8.8), 2% SDS, 200mM NaCl, 50% glycerol, BPB 0.01%, NaN₃ 0.02%.

[STORAGE]



Store at 4°C for frequent use. Stored at -20°C to -80°C in a manual defrost freezer for one year without detectable loss of activity. Avoid repeated freeze-thaw cycles.