

A90387Mu01

Polyclonal Antibody to Complement Component 3a (C3a)

Organism: Mus musculus (Mouse)

Instruction manual

FOR IN VITRO USE AND RESEARCH USE ONLY
NOT FOR USE IN CLINICAL DIAGNOSTIC PROCEDURES

6th Edition (Revised in March, 2013)

[PRODUCT INFORMATION]

Immunogen: C3a, Mouse

Clonality: Polyclonal

Host: Rabbit

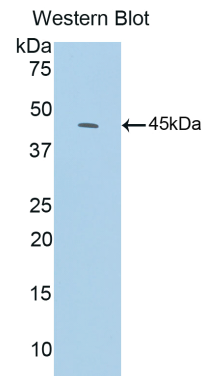
Immunoglobulin Type: IgG

Purification: Affinity Chromatography.

Applications: WB, ICC, IHC-P, IHC-F

Concentration: 200µg/mL

UOM: 100µg



Sample: Recombinant C3a, Mouse




[IMMUNOGEN INFORMATION]

Immunogen: Recombinant C3a (Glu1314~Asn1663) expressed in *E. coli*.

USCN Accession No.: P90387Mu01

Sequence: The target protein is fused with N-terminal His-Tag and its sequence is listed below.

MGHHHHHSGSEF -ENGNLLR SEETKQNEAF SLTAKGKGRG TLSVVAVYHA
KLKSKVTCKK FDLRVSIRPA PETAKKPEEA KNTMFLEICT KYLGDVDATM SILDISMMTG
FAPDTKDLEL LASGVDRIYIS KYEMNKAFSN KNTLIIYLEK ISHTEEDCLT FKVHQYFNVG
LIQPGSVKVY SYYNLEESCT RFYHPEKDDG MLSKLCHSEM CRCAEENCFM QQSQEKINLN
VRLDKACEPG VDYVYKTELT NIELLDDFDE YTMTIQQVIK SGSDEVQAGQ QRFISHIKC
RNALKLQK GK KYLMWGLSSD LWGEKPNTSY IIGKDTWVEH WPEAEECQDQ
KYQKQCEELG AFTESMVVYG CPN

Unique product Superb quality Client favorite Nicest service  ISO9001:2008 ;  ISO13485:2003 ; 

[ANTIBODY SPECIFICITY]

The antibody is a rabbit polyclonal antibody raised against C3a. It has been selected for its ability to recognize C3a in immunohistochemical staining and western blotting.

[APPLICATIONS]

Western blotting: 1:100-400

Immunocytochemistry in formalin fixed cells: 1:100-500

Immunohistochemistry in formalin fixed frozen section: 1:100-500

Immunohistochemistry in paraffin section: 1:50-200

Optimal working dilutions must be determined by end user.

[CONTENTS]

Form & Buffer: Supplied as solution form in PBS, pH7.4, containing 0.02% NaN₃, 50% glycerol.

[QUALITY CONTROL]

Content: The quality control contains recombinant C3a (Glu1314~Asn1663) disposed in loading buffer.

Usage: 10uL per well when 3,3'-Diaminobenzidine(DAB) as the substrate.
5uL per well when used in enhanced chemiluminescent (ECL).

Note: The quality control is specifically manufactured as the positive control. Not used for other purposes.

Loading Buffer: 100mM Tris(pH8.8), 2% SDS, 200mM NaCl, 50% glycerol, BPB 0.01%, NaN₃ 0.02%.

[STORAGE]

Store at 4°C for frequent use. Stored at -20°C to -80°C in a manual defrost freezer for one year without detectable loss of activity. Avoid repeated freeze-thaw cycles.

Unique product Superb quality Client favorite Nicest service  ISO9001:2008;  ISO13485:2003; CE