

PAA348Hu01

Polyclonal Antibody to Cathepsin A (CTSA)

Organism Species: Homo sapiens (Human)

Instruction manual

FOR IN VITRO USE AND RESEARCH USE ONLY

NOT FOR USE IN CLINICAL DIAGNOSTIC PROCEDURES

[**PRODUCT INFORMATION**]

Immunogen: CTSA, Human

Clonality: Polyclonal

Host: Rabbit

Immunoglobulin Type: IgG

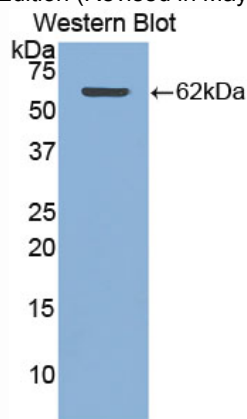
Purification: Affinity Chromatography.

Applications: WB, ICC, IHC-P, IHC-F, ELISA

Concentration: 200µg/mL

UOM: 100µg

7th Edition (Revised in May, 2013)



Sample: Recombinant CTSA, Human

[**IMMUNOGEN INFORMATION**]

Immunogen: Recombinant CTSA (Asp215~Met470) expressed in *E.coli*.

Accession No.: RPA348Hu01

Sequence: The target protein is fused with two N-terminal Tags, His-tag and GST-tag and its sequence is listed below.

MSPILGYWKI KGLVQPTRL L LEYLEEKYEE HLYERDEGDK WRNKKFELGL EFPNLPYYID
GDVKLTQSMA IIRYIADKHN MLGGCPKERA EISMLEGAVL DIRYGVSRIA YSKDFETLKV
DFLSKLP EML KMFEDRLCHK TYLNGDHVTH PDFMLYDALD VVLYMDPMCL DAFPKLVCFK
KRIEAIQID KYLKSSKYIA WPLQG WQATF GGGDHPKSD GSTSGSGHHH HHSAGLVPR
GSTAIGMKET AAKFERQHM DSPDLGTLEV LFGGPLGSEF-DNSLVY FAYYHGLLGN
RLWSSLQTHC CSQNKCNFYD NKDLECVTNL QEVARIVGNS GLNIYNLYAP CAGGVPSHFR
YEKDTVVVQDLGNIFTRLPL KRMWHQALLR SGDKVRMDPP CTNTTAASY LNNPYVRKAL

NIPEQLPQWD MCNFLVNLQY RRLYRSMNSQ YLKLLSSQKY QILLYNGDVD
MACNFMGDEW FVDSLNLQKMEVQRRPWLVKY GDSGEQIAGF VKEFSHIAFL TIKGAGHMVP
TDKPLAAFTM

[ANTIBODY SPECIFICITY]

The antibody is a rabbit polyclonal antibody raised against CTSA. It has been selected for its ability to recognize CTSA in immunohistochemical staining and western blotting.

[APPLICATIONS]

Western blotting: 1:100-400

Immunocytochemistry in formalin fixed cells: 1:100-500

Immunohistochemistry in formalin fixed frozen section: 1:100-500

Immunohistochemistry in paraffin section: 1:50-200

Enzyme-linked Immunosorbent Assay: 1:100-200

Optimal working dilutions must be determined by end user.

[CONTENTS]

Form & Buffer: Supplied as solution form in PBS, pH7.4, containing 0.02% NaN₃, 50% glycerol.

[QUALITY CONTROL]

Content: The quality control contains recombinant CTSA (Asp215~Met470) disposed in loading buffer.

Usage: 10uL per well when 3,3'-Diaminobenzidine(DAB) as the substrate.
5uL per well when used in enhanced chemiluminescent (ECL).

Note: The quality control is specifically manufactured as the positive control. Not used for other purposes.

Loading Buffer: 100mM Tris(pH8.8), 2% SDS, 200mM NaCl, 50% glycerol, BPB 0.01%, NaN₃ 0.02%.

[STORAGE]

Store at 4°C for frequent use. Stored at -20°C to -80°C in a manual defrost freezer for one year without detectable loss of activity. Avoid repeated freeze-thaw cycles.