

**PAA259Ga01**

**Polyclonal Antibody to Annexin A5 (ANXA5)**

**Organism Species: Chicken (Gallus)**

***Instruction manual***

FOR IN VITRO USE AND RESEARCH USE ONLY  
NOT FOR USE IN CLINICAL DIAGNOSTIC PROCEDURES

9th Edition (Revised in Jul, 2013)

## [ **PRODUCT INFORMATION** ]

**Immunogen:** ANXA5, Gallus

**Clonality:** Polyclonal

**Host:** Rabbit

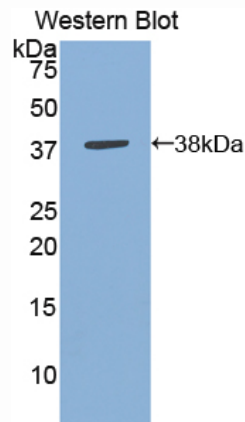
**Immunoglobulin Type:** IgG

**Purification:** Affinity Chromatography.

**Applications:** WB, ICC, IHC-P, IHC-F, ELISA

**Concentration:** 200µg/mL

**UOM:** 100µg



*Sample: Recombinant ANXA5, Gallus*

## [ **IMMUNOGEN INFORMATION** ]

**Immunogen:** Recombinant ANXA5 (Met1~Glu321) expressed in *E.coli*.

**Accession No.:** RPA259Ga01

**Sequence:** The target protein is fused with N-terminal His-Tag and its sequence is listed below.

MGHHHHHHSGS-MAKYTRGTVT AFSPFDARAD AEALRKAMKG MGTDEETILK  
ILTSRNNAGR QEIASAFKTL FGRDLVDDLK SELTGKFETL MVSLMRPARI FDAHALKHA  
KGAGTNEKVL TEILASRTPA EVQNIKQVYM QEYEANLEDK ITGETSGHFQ RLLVLLQAN  
RDPDGRVDEA LVEKDAQVLF RAGELKWGTD EETFITILGT RSVSHLRRVF DKYMTISGFQ  
IEETIDRETS GDLEKLLAV VKCIRSVPAY FAETLYYSMK GAGTDDDTLI RVMVSRSEID  
LLDIRHEFRK NFAKSLYQMI QKDTSGDYRK ALLLLCGGDD E

## **[ ANTIBODY SPECIFICITY ]**

The antibody is a rabbit polyclonal antibody raised against ANXA5. It has been selected for its ability to recognize ANXA5 in immunohistochemical staining and western blotting.

## **[ APPLICATIONS ]**

Western blotting: 1:100-400

Immunocytochemistry in formalin fixed cells: 1:100-500

Immunohistochemistry in formalin fixed frozen section: 1:100-500

Immunohistochemistry in paraffin section: 1:50-200

Enzyme-linked Immunosorbent Assay: 1:100-200

Optimal working dilutions must be determined by end user.

## **[ CONTENTS ]**

**Form & Buffer:** Supplied as solution form in PBS, pH7.4, containing 0.02%  $\text{NaN}_3$ , 50% glycerol.

## **[ QUALITY CONTROL ]**

**Content:** The quality control contains recombinant ANXA5 (Met1~Glu321) disposed in loading buffer.

**Usage:** 10uL per well when 3,3'-Diaminobenzidine(DAB) as the substrate.  
5uL per well when used in enhanced chemiluminescent (ECL).

**Note:** The quality control is specifically manufactured as the positive control. Not used for other purposes.

**Loading Buffer:** 100mM Tris(pH8.8), 2% SDS, 200mM NaCl, 50% glycerol, BPB 0.01%,  $\text{NaN}_3$  0.02%.

## **[ STORAGE ]**

Store at 4°C for frequent use. Stored at -20°C to -80°C in a manual defrost freezer for one year without detectable loss of activity. Avoid repeated freeze-thaw cycles.