

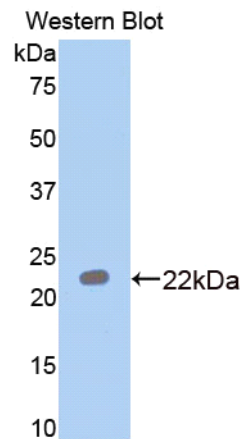
**A90243Ra01**  
**Antibody to Paraoxonase 1 (PON1)**  
***Instruction manual***

FOR IN VITRO USE AND RESEARCH USE ONLY  
NOT FOR USE IN CLINICAL DIAGNOSTIC PROCEDURES

6th Edition (Revised in March, 2013)

**[ PRODUCT INFORMATION ]**

**Immunogen:** PON1  
**Clonality:** Polyclonal  
**Host:** Rabbit  
**Organism:** Rat  
**Immunoglobulin Type:** IgG  
**Purification:** Affinity Chromatography.  
**Applications:** WB, ICC, IHC-P, IHC-F  
**Concentration:** 200µg/mL  
**UOM:** 100µg






*Sample: Recombinant Rat PON1*

**[ IMMUNOGEN INFORMATION ]**

**Immunogen:** Recombinant rat PON1 (Ala2~Phe186) expressed in *E. coli*.  
**USCN Accession No.:** P90243Ra01  
**Sequence:** The target protein is fused with N-terminal His-Tag and its sequence is listed below.

MGHHHHHHSGSEF- AKLLGLTLV GLVLALYKNH RSSYQTRLNA FREVTPVDLP  
NCTLVKGIEA GAEDLEILPN GLTFFSTGLK YPGIKSFDPS KPGKILLMDL NEKEPAVSEL  
AIMGNTLDMS SFNPHGISTF IDEDNTVYLL VVSHPDSSST VEVFKFQEEE RSLHLKTI  
HELLPSINDI AAVGPESFYA TNDHYF

*Unique product Superb quality Client favorite Nicest service*  ISO9001:2008;  ISO13485:2003; 

## [ ANTIBODY SPECIFICITY ]

Anti PON1 is a rabbit polyclonal antibody raised against rat PON1. This antibody has been selected for its ability to recognize rat PON1 in immunohistochemical staining and western blotting, non cross-reactive with other members of the family.

## [ APPLICATIONS ]

Western blotting: 1:100-400

Immunocytochemistry in formalin fixed cells: 1:100-500

Immunohistochemistry in formalin fixed frozen section: 1:100-500

Immunohistochemistry in paraffin section: 1:50-200

Optimal working dilutions must be determined by end user.

## [ CONTENTS ]

**Form & Buffer:** Supplied as solution form in PBS, pH7.4, containing 0.02% Na<sub>3</sub>N, 50% glycerol.

## [ QUALITY CONTROL ]

**Content:** The quality control contains recombinant rat PON1(Ala2~Phe186) disposed in loading buffer.

**Usage:** 10uL per well when 3,3'-Diaminobenzidine(DAB) as the substrate.  
5uL per well when used in enhanced chemiluminescent (ECL).

**Note:** The quality control is specifically manufactured as the positive control. Not used for other purposes.

**Loading Buffer:** 100mM Tris(pH8.8), 2% SDS, 200mM NaCl, 50% glycerol, BPB 0.01%, Na<sub>3</sub>N 0.02%.

## [ STORAGE ]

Store at 4°C for frequent use. Stored at -20°C to -80°C in a manual defrost freezer for one year without detectable loss of activity. Avoid repeated freeze-thaw cycles.