

PAA228Hu01

Polyclonal Antibody to Anti-Mullerian Hormone (AMH)

Organism: Homo sapiens (Human)

Instruction manual

FOR IN VITRO USE AND RESEARCH USE ONLY
NOT FOR USE IN CLINICAL DIAGNOSTIC PROCEDURES

9th Edition (Revised in Jul, 2013)

[PRODUCT INFORMATION]

Immunogen: AMH, Human

Clonality: Polyclonal

Host: Rabbit

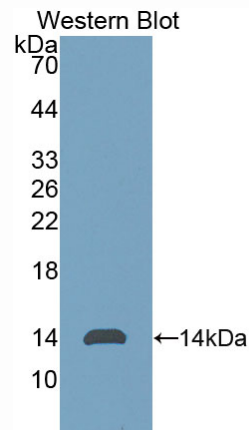
Immunoglobulin Type: IgG

Purification: Affinity Chromatography.

Applications: WB, ICC, IHC-P, IHC-F, ELISA

Concentration: 200µg/mL

UOM: 50µg



Sample: Recombinant AMH, Human

[IMMUNOGEN INFORMATION]

Immunogen: Recombinant AMH (Ala453~Arg560) expressed in *E.coli*.

Accession No.: RPA228Hu01

Sequence: The target protein is fused with N-terminal His-Tag and its sequence is listed below.

MGHHHHHSGSEF- AGATAADG PCALRELSVD LRAERSVLIP ETYQANNCQG
VCGWPQSDRN PRYGNHVLL LKMQVRGAAL ARPPCCVPTA YAGKLLISLS EERISAHHVP
NMVATECGCR

[ANTIBODY SPECIFICITY]

The antibody is a rabbit polyclonal antibody raised against AMH. It has been selected for its ability to recognize AMH in immunohistochemical staining and western blotting.

[APPLICATIONS]

Western blotting: 1:50-400

Immunocytochemistry in formalin fixed cells: 1:50-500

Immunohistochemistry in formalin fixed frozen section: 1:50-500

Immunohistochemistry in paraffin section: 1:10-100

Enzyme-linked Immunosorbent Assay: 1:100-200

Optimal working dilutions must be determined by end user.

[CONTENTS]

Form & Buffer: Supplied as solution form in PBS, pH7.4, containing 0.02% NaN₃, 50% glycerol.

[STORAGE]

Store at 4°C for frequent use. Stored at -20°C to -80°C in a manual defrost freezer for one year without detectable loss of activity. Avoid repeated freeze-thaw cycles.