

**PAA217Mu01**

**Polyclonal Antibody to Alpha-1-Microglobulin/Bikunin Precursor (a1M)**

**Organism Species: Mus musculus (Mouse)**

***Instruction manual***

FOR IN VITRO USE AND RESEARCH USE ONLY  
NOT FOR USE IN CLINICAL DIAGNOSTIC PROCEDURES

9th Edition (Revised in Jul, 2013)

## **[ PRODUCT INFORMATION ]**

**Immunogen:** a1M, Mouse

**Clonality:** Polyclonal

**Host:** Rabbit

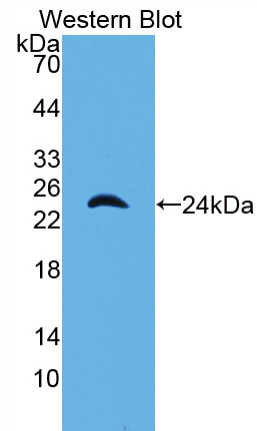
**Immunoglobulin Type:** IgG

**Purification:** Affinity Chromatography.

**Applications:** WB, ICC, IHC-P, IHC-F, ELISA

**Concentration:** 200µg/mL

**UOM:** 100µg



*Sample: Recombinant a1M, Mouse*

## **[ IMMUNOGEN INFORMATION ]**

**Immunogen:** Recombinant a1M (Arg18~Ala202) expressed in *E.coli*.

**Accession No.:** RPA217Mu01

**Sequence:** The target protein is fused with N-terminal His-Tag and its sequence is listed below.

MGHHHHHSGSEF-RAD PASTLPDIQV QENFSESRIY GKWYNLAVGS TCPWLSRIKD  
KMSVSTLVLQ EGATETEISM TSTRWRRGVC EEITGAYQKT DIDGKFLYHK SKWNITLESY  
VVHTNYDEYA IFLTKKSSH HGLTITAKLY GREPQLRDSL LQEFKDVALN VGISENSIIF  
MPDRGECVPG DREVEPTSIA RA

## **[ ANTIBODY SPECIFICITY ]**

The antibody is a rabbit polyclonal antibody raised against a1M. It has been selected for its ability to recognize a1M in immunohistochemical staining and western blotting.

## **[ APPLICATIONS ]**

Western blotting: 1:50-400

Immunocytochemistry in formalin fixed cells: 1:50-500

Immunohistochemistry in formalin fixed frozen section: 1:50-500

Immunohistochemistry in paraffin section: 1:10-100

Enzyme-linked Immunosorbent Assay: 1:100-200

Optimal working dilutions must be determined by end user.

## **[ CONTENTS ]**

**Form & Buffer:** Supplied as solution form in PBS, pH7.4, containing 0.02% NaN<sub>3</sub>, 50% glycerol.

## **[ STORAGE ]**

Store at 4°C for frequent use. Stored at -20°C to -80°C in a manual defrost freezer for one year without detectable loss of activity. Avoid repeated freeze-thaw cycles.