

PAA207Ra01**Polyclonal Antibody to Alanine Aminotransferase (ALT)****Organism Species: *Rattus norvegicus* (Rat)*****Instruction manual***

FOR IN VITRO USE AND RESEARCH USE ONLY

NOT FOR USE IN CLINICAL DIAGNOSTIC PROCEDURES

9th Edition (Revised in Jul, 2013)

[PRODUCT INFORMATION]**Immunogen:** ALT, Rat**Clonality:** Polyclonal**Host:** Rabbit**Immunoglobulin Type:** IgG**Purification:** Affinity Chromatography.**Applications:** WB, ICC, IHC-P, IHC-F, ELISA**Concentration:** 200µg/mL**UOM:** 100µg**[IMMUNOGEN INFORMATION]****Immunogen:** Recombinant ALT (Met1~Ser496) expressed in *E.coli*.**USCN Accession No.:** RPA207Ra01**Sequence:** The target protein is fused with N-terminal His-Tag and its sequence is listed below.

MGHHHHHHSSEF-MASRVNDQSQ ASRNLKGGKV LTLDTMNPCV RRVEYAVRGP
IVQRALELEQ ELRQGVKKPF TEVIRANIGD AQAMGQRPIT FFRQVLALCV YPNLLSSPDF
PEDAKRRAER ILQACGGHSL GAYSISSGIQ PIREDNAQYI ERRDGGIPAD PNNIFLSTGA
SDAIVTMLKL LVSGEGRART GVLIPQPYP LYSAAALAEALD AVQVDYYLDE ERAWALDIAE
LRRALCQARD RCCPRVLCVI NPGNPTGQVQ TRECIEAVIR FAFKEGLFLM ADEVYQDNVY
AEGSQFHFSK KVLMEMGPPY STQQELASFH SVSKGYMGEC GFRGGYVEVV
NMDAEVQKQM GKLM SVRLCP PVPGQALMDM VVSPPTPSEP SFKQFQAERQ
EVLAELA AKA KLTEQVFNEA PGIRCNPVQG AMYSFPQVQL PLKAVQRAQE LGLAPDMFFC
LCLLEETGIC VVPGSGFGQQ EGTYHFRMTI LPPMEKLRL LLEKLSHFHAK FTHEYS

[ANTIBODY SPECIFICITY]

The antibody is a rabbit polyclonal antibody raised against ALT. It has been selected for its ability to recognize ALT in immunohistochemical staining and western blotting.

[APPLICATIONS]

Western blotting: 1:100-400

Immunocytochemistry in formalin fixed cells: 1:100-500

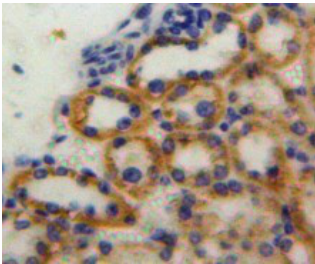
Immunohistochemistry in formalin fixed frozen section: 1:100-500

Immunohistochemistry in paraffin section: 1:50-200

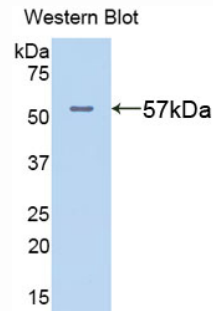
Enzyme-linked Immunosorbent Assay: 1:100-200

Optimal working dilutions must be determined by end user.

[IMAGES]



Used in DAB staining on formalin fixed
paraffin-embedded Liver tissue



Used in Western Blot, Sample:
Recombinant ALT, Rat

[CONTENTS]

Form & Buffer: Supplied as solution form in PBS, pH7.4, containing 0.02% NaN₃, 50% glycerol.

[QUALITY CONTROL]

Content: The quality control contains recombinant ALT (Met1~Ser496) dispensed in loading buffer.

Usage: 10uL per well when 3,3'-Diaminobenzidine(DAB) as the substrate.
5uL per well when used in enhanced chemiluminescent (ECL).

Note: The quality control is specifically manufactured as the positive control. Not used for other purposes.

Loading Buffer: 100mM Tris(pH8.8), 2% SDS, 200mM NaCl, 50% glycerol, BPB 0.01%, NaN₃ 0.02%.

[STORAGE]

Store at 4°C for frequent use. Stored at -20°C to -80°C in a manual defrost freezer for one year without detectable loss of activity. Avoid repeated freeze-thaw cycles.