

PAA183Hu01

Polyclonal Antibody to Galactosidase Alpha (GLa)

Organism Species: Homo sapiens (Human)

Instruction manual

FOR IN VITRO USE AND RESEARCH USE ONLY
NOT FOR USE IN CLINICAL DIAGNOSTIC PROCEDURES

9th Edition (Revised in Jul, 2013)

[PRODUCT INFORMATION]

Immunogen: GLa, Human

Clonality: Polyclonal

Host: Rabbit

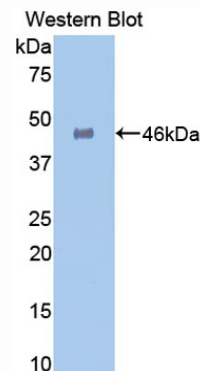
Immunoglobulin Type: IgG

Purification: Affinity Chromatography.

Applications: WB, ICC, IHC-P, IHC-F, ELISA

Concentration: 200µg/mL

UOM: 100µg



Sample: Recombinant GLa, Human

[IMMUNOGEN INFORMATION]

Immunogen: Recombinant GLa (Trp81~Leu429) expressed in *E.coli*.

Accession No.: RPA183Hu01

Sequence: The target protein is fused with two N-terminal Tags, His-tag and S-tag and its sequence is listed below.

MHHHHHHSSG LVPRGSGMKE TAAAKFERQH MDSPDLGTDD DDKAMADIGS EF-
WKDAGYEYLC IDDCWMAPQR DSEGRLQADP QRFPHGIRQL ANYVHSGKGLK
LGIYADVGNK TCAGFPGSFG YYDIDAQTFD DWGVDLLKFD GCYCDSLENL ADGYKHMSLA
LNRTGRSIVY SCEWPLYMWP FQKPNYTEIR QYCNHWRNFA DIDDSWKSIL SILDWTSFNQ
ERIVDVAGPG GWNDPDM LVI GNFGLSWNQQ VTQMALWAIM AAPLFMSNDL RHISPQAKAL
LQDKDVIAIN QDPLGKQGYQ LRQGDNFEVW ERPLSGLAWA VAMINRQEIG GPRSYTIAVA
SLGKGVACNP ACFITQLLPV KRKLG FYEWT SRLRSHINPT GTVLLQLENT MQMSLKDLL

[ANTIBODY SPECIFICITY]

The antibody is a rabbit polyclonal antibody raised against GLa. It has been selected for its ability to recognize GLa in immunohistochemical staining and western blotting.

[APPLICATIONS]

Western blotting: 1:100-400

Immunocytochemistry in formalin fixed cells: 1:100-500

Immunohistochemistry in formalin fixed frozen section: 1:100-500

Immunohistochemistry in paraffin section: 1:50-200

Enzyme-linked Immunosorbent Assay: 1:100-200

Optimal working dilutions must be determined by end user.

[CONTENTS]

Form & Buffer: Supplied as solution form in PBS, pH7.4, containing 0.02% NaN_3 , 50% glycerol.

[QUALITY CONTROL]

Content: The quality control contains recombinant GLa (Trp81~Leu429) disposed in loading buffer.

Usage: 10uL per well when 3,3'-Diaminobenzidine(DAB) as the substrate.

5uL per well when used in enhanced chemiluminescent (ECL).

Note: The quality control is specifically manufactured as the positive control. Not used for other purposes.

Loading Buffer: 100mM Tris(pH8.8), 2% SDS, 200mM NaCl, 50% glycerol, BPB 0.01%, NaN_3 0.02%.

[STORAGE]

Store at 4°C for frequent use. Stored at -20°C to -80°C in a manual defrost freezer for one year without detectable loss of activity. Avoid repeated freeze-thaw cycles.