

PAA156Hu01**Polyclonal Antibody to Carbohydrate Antigen 19-9 (CA19-9)****Organism Species: Homo sapiens (Human)****Instruction manual**

FOR IN VITRO USE AND RESEARCH USE ONLY

NOT FOR USE IN CLINICAL DIAGNOSTIC PROCEDURES

9th Edition (Revised in Jul, 2013)

[PRODUCT INFORMATION]**Immunogen:** CA19-9, Human**Clonality:** Polyclonal**Host:** Rabbit**Immunoglobulin Type:** IgG**Purification:** Affinity Chromatography.**Applications:** WB, ICC, IHC-P, IHC-F, ELISA**Concentration:** 200µg/mL**UOM:** 100µg**[IMMUNOGEN INFORMATION]****Immunogen:** Recombinant CA19-9 (Arg35~Thr361) expressed in *E.coli*.**Accession No.:** RPA156Hu01**Sequence:** The target protein is fused with N-terminal His-Tag and its sequence is listed below.

MGHHHHHSGSEF-RVSRDD ATGSPRAPSG SSRQDTTPTR PTLILLWTW PFHIPVALSR
CSEMVPGTAD CHITADRKVY PQADTVIVHH WDIMSNPKSR LPPSPRPQGQ RWIWFNLEPP
PNCQHLEALD RYFNLTMSYR SDSLIFTPYG WLEPWSGQPA HPPLNLSAKT ELVAWAVSNW
KPDSARVRY Y QSLQAHLKVD VYGRSHKPLP KGTMETLSR YKFYLAFENS LHPDYITEKL
WRNALEAWAV PVVLGPSRSN YERFLPPDAF IHVDDFQSPK DLARYLQELD KDHARYLSYF
RWRETLRPRS FSWALDFCKA CWKLQQESRY QTVRSIAAWF T

[ANTIBODY SPECIFICITY]

The antibody is a rabbit polyclonal antibody raised against CA19-9. It has been selected for its ability to recognize CA19-9 in immunohistochemical staining and western blotting.

[APPLICATIONS]

Western blotting: 1:100-400

Immunocytochemistry in formalin fixed cells: 1:100-500

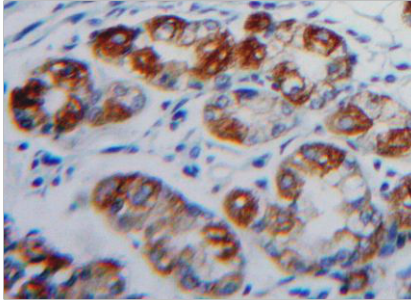
Immunohistochemistry in formalin fixed frozen section: 1:100-500

Immunohistochemistry in paraffin section: 1:50-200

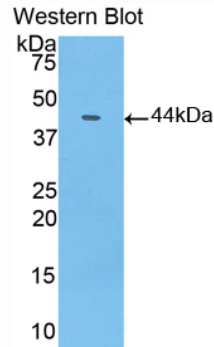
Enzyme-linked Immunosorbent Assay: 1:100-200

Optimal working dilutions must be determined by end user.

[**IMAGES**]



Used in DAB staining on formalin fixed
paraffin-embedded Stomach tissue



Used in Western Blot, Sample:
Recombinant CA19-9, Human

[**CONTENTS**]

Form & Buffer: Supplied as solution form in PBS, pH7.4, containing 0.02% NaN₃, 50% glycerol.

[**QUALITY CONTROL**]

Content: The quality control contains recombinant CA19-9 (Arg35~Thr361) disposed in loading buffer.

Usage: 10uL per well when 3,3'-Diaminobenzidine(DAB) as the substrate.
5uL per well when used in enhanced chemiluminescent (ECL).

Note: The quality control is specifically manufactured as the positive control. Not used for other purposes.

Loading Buffer: 100mM Tris(pH8.8), 2% SDS, 200mM NaCl, 50% glycerol, BPB 0.01%, NaN₃ 0.02%.

[**STORAGE**]

Store at 4°C for frequent use. Stored at -20°C to -80°C in a manual defrost freezer for one year without detectable loss of activity. Avoid repeated freeze-thaw cycles.