

PAA103Hu01

Polyclonal Antibody to Matrix Metalloproteinase 8 (MMP8)

Organism Species: Homo sapiens (Human)

Instruction manual

FOR IN VITRO USE AND RESEARCH USE ONLY
NOT FOR USE IN CLINICAL DIAGNOSTIC PROCEDURES

9th Edition (Revised in Jul, 2013)

[**PRODUCT INFORMATION**]

Immunogen: MMP8, Human

Clonality: Polyclonal

Host: Rabbit

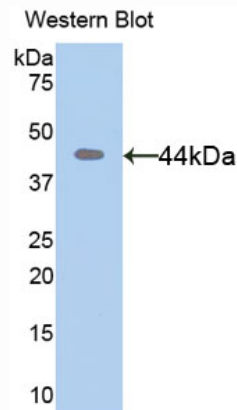
Immunoglobulin Type: IgG

Purification: Affinity Chromatography.

Applications: WB, ICC, IHC-P, IHC-F, ELISA

Concentration: 200µg/mL

UOM: 100µg



Sample: Recombinant MMP8, Human

[**IMMUNOGEN INFORMATION**]

Immunogen: Recombinant MMP8 (Leu101~Gly467) expressed in *E.coli*.

USCN Accession No.: RPA103Hu01

Sequence: The target protein is fused with N-terminal His-Tag and its sequence is listed below.

MGHHHHHHSGSEF-LTPGNPKWER TNLTYRIRNY TPQLSEAEVE RAIKDAFELW
SVASPLIFTR ISQGEADINI AFYQRDHGDN SPFDGPNLIL AHAFQPGQGI GGDAHFDAEE
TWTNTSANYN LFLVAAHEFG HSLGLAHSSD PGALMYPNYA FRETSNYSLP QDDIDGIQAI
YGLSSNPIQP TGPSTPKPCD PSLTFDAITT LRGEILFFKD RYFWRRHQPQL QRVEMNFISL
FWPSLPTGIQ AAYEDFDRDL IFLFKGNQYW ALSGYDILQG YPKDISNYGF PSSVQAIDAA
VFYRSKTYFF VNDQFWRYDN QRQFMPEGYP KSISGAFFPGI ESKVDAVFQQ EHHFFHVFSGP
RYYAFDLIAQ RVTRVARGNK WLNCRYG

[ANTIBODY SPECIFICITY]

The antibody is a rabbit polyclonal antibody raised against MMP8. It has been selected for its ability to recognize MMP8 in immunohistochemical staining and western blotting.

[APPLICATIONS]

Western blotting: 1:100-400

Immunocytochemistry in formalin fixed cells: 1:100-500

Immunohistochemistry in formalin fixed frozen section: 1:100-500

Immunohistochemistry in paraffin section: 1:50-200

Enzyme-linked Immunosorbent Assay: 1:100-200

Optimal working dilutions must be determined by end user.

[CONTENTS]

Form & Buffer: Supplied as solution form in PBS, pH7.4, containing 0.02% NaN₃, 50% glycerol.

[QUALITY CONTROL]

Content: The quality control contains recombinant MMP8 (Leu101~Gly467) disposed in loading buffer.

Usage: 10uL per well when 3,3'-Diaminobenzidine(DAB) as the substrate.

5uL per well when used in enhanced chemiluminescent (ECL).

Note: The quality control is specifically manufactured as the positive control. Not used for other purposes.

Loading Buffer: 100mM Tris(pH8.8), 2% SDS, 200mM NaCl, 50% glycerol, BPB 0.01%, NaN₃ 0.02%.

[STORAGE]

Store at 4°C for frequent use. Stored at -20°C to -80°C in a manual defrost freezer for one year without detectable loss of activity. Avoid repeated freeze-thaw cycles.