

PAA066Mu01

**Polyclonal Antibody to Interleukin 1 Receptor Type I (IL1R1)****Organism Species: Mus musculus (Mouse)****Instruction manual**

FOR IN VITRO USE AND RESEARCH USE ONLY  
NOT FOR USE IN CLINICAL DIAGNOSTIC PROCEDURES

---

---

9th Edition (Revised in Jul, 2013)

**[ PRODUCT INFORMATION ]****Immunogen:** IL1R1, Mouse**Clonality:** Polyclonal**Host:** Rabbit**Immunoglobulin Type:** IgG**Purification:** Affinity Chromatography.**Applications:** WB, ICC, IHC-P, IHC-F, ELISA**Concentration:** 200µg/mL**UOM:** 100µg**[ IMMUNOGEN INFORMATION ]****Immunogen:** Recombinant IL1R1 (Leu20~Lys338) expressed in *E.coli*.**Accession No.:** RPA066Mu01**Sequence:** The target protein is fused with two N-terminal Tags, His-tag and T7-tag and its sequence is listed below.

MGSSHHHHHH SSSLVPRGSH MASMTGGQQM GRGSEF- L EIDVCTEYPN QIVLFLSVNE  
IDIRKCLTP NKMHGDTIIW YKNSDKTPIS ADRDSRIHQQ NEHLWFVPAK VEDSGYYYCI  
VRNSTYCLKT KVTVTVLEND PGLCYSTQAT FPQRLHIAGD GSLVCPYVSY FKDENNELPE  
VQWYKNCKPL LLDNVSFFGV KDKLLVRNVA EEHRGDYICR MSYTFRGKQY PVTRVIQFIT  
IDENKRDRPV ILSRNETIE ADPGSMIQLI CNVTGQFSDL VYWKWNGSEI EWNDPFLAED  
YQFVEHPSTK RKYTLITTLN ISEVKSQFYR YPFICVVKNT NIFESAHVQL IYPVPDFK

**[ ANTIBODY SPECIFICITY ]**

The antibody is a rabbit polyclonal antibody raised against IL1R1. It has been selected for its ability to recognize IL1R1 in immunohistochemical staining and western blotting.

**[ APPLICATIONS ]**

Western blotting: 1:100-400

Immunocytochemistry in formalin fixed cells: 1:100-500

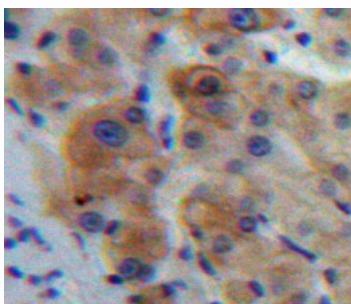
Immunohistochemistry in formalin fixed frozen section: 1:100-500

Immunohistochemistry in paraffin section: 1:50-200

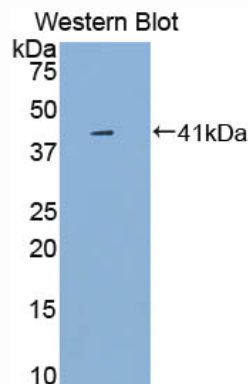
Enzyme-linked Immunosorbent Assay: 1:100-200

Optimal working dilutions must be determined by end user.

## [ IMAGES ]



Used in DAB staining on formalin fixed  
paraffin-embedded Liver tissue



Used in Western Blot, Sample:  
Recombinant IL1R1, Mouse

## [ CONTENTS ]

**Form & Buffer:** Supplied as solution form in PBS, pH7.4, containing 0.02% NaN<sub>3</sub>, 50% glycerol.

## [ QUALITY CONTROL ]

**Content:** The quality control contains recombinant IL1R1 (Leu20~Lys338) disposed in loading buffer.

**Usage:** 10uL per well when 3,3'-Diaminobenzidine(DAB) as the substrate.  
5uL per well when used in enhanced chemiluminescent (ECL).

**Note:** The quality control is specifically manufactured as the positive control. Not used for other purposes.

**Loading Buffer:** 100mM Tris(pH8.8), 2% SDS, 200mM NaCl, 50% glycerol, BPB 0.01%, NaN<sub>3</sub> 0.02%.

## [ STORAGE ]

Store at 4°C for frequent use. Stored at -20°C to -80°C in a manual defrost freezer for one year without detectable loss of activity. Avoid repeated freeze-thaw cycles.